

KENCO MODEL "EPG" LEVEL GAUGE ASSEMBLY INSTRUCTIONS

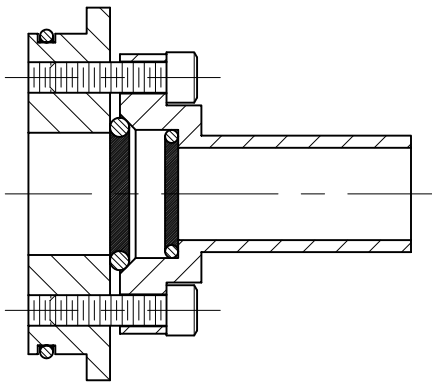
MEASURE CENTER-TO-CENTER DISTANCE BETWEEN GAUGE GLASS VALVE VESSEL CONNECTIONS. USE VALVE MANUFACTURER'S RECOMMENDED GAUGE GLASS SUBTRACTOR TO DETERMINE OVERALL LENGTH OF KENCO MODEL "EPG" LEVEL GAUGE.

IT MAY BE NECESSARY TO SIMPLY MEASURE THE OVERALL LENGTH OF EXISTING GAUGE GLASS TO DETERMINE OVERALL LENGTH OF "EPG" LEVEL GAUGE IF INFORMATION ON EXISTING GAUGE GLASS VALVES IS NOT AVAILABLE.

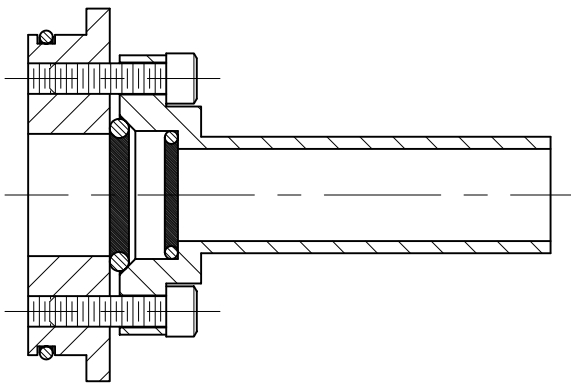
OVERALL LENGTH OF 5/8"Ø "EPG" SIGHT TUBE TO BE CUT 3-3/8" SHORTER THAN OVERALL LENGTH DETERMINED FOR GAUGE. RED LINE ADHESIVE TAPE ON SIGHT TUBE TO BE CUT OFF 1/2" FROM EACH END TO ALLOW FOR A POSITIVE O-RING SEAL. NOTE: CUT SIGHT TUBE AS SQUARE AS POSSIBLE REMOVING ANY SHARP CUTTING EDGES. THIS WILL HELP AVOID DAMAGING O-RING SEALS DURING ASSEMBLY.

OVERALL LENGTH OF 2"Ø "EPG" SIGHT TUBE SHIELD TO BE CUT 4-1/8" SHORTER THAN OVERALL LENGTH DETERMINED FOR GAUGE. CUT OFF SHIELD AS SQUARE AS POSSIBLE REMOVING ANY SHARP EDGES AND BURRS. NOTE: CARE TO BE TAKEN WHEN CUTTING TO AVOID SCRATCHING OUTER SURFACE.

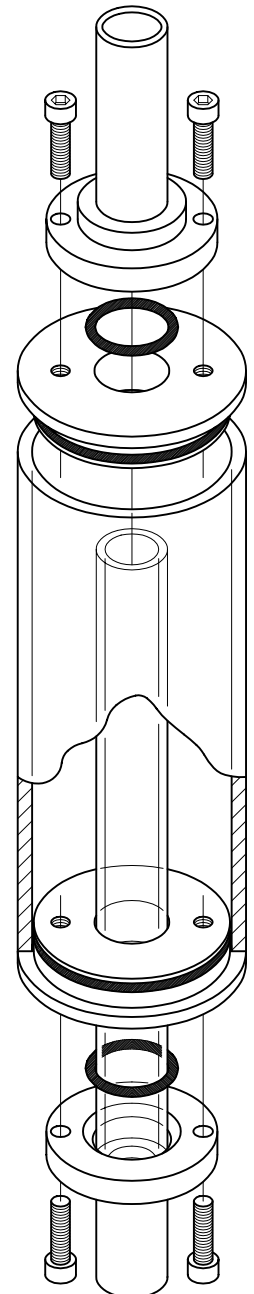
ASSEMBLE GAUGE/END CONNECTIONS AS SHOWN BELOW.



LOWER NOZZLE CONNECTION ASSEMBLY



UPPER NOZZLE CONNECTION ASSEMBLY



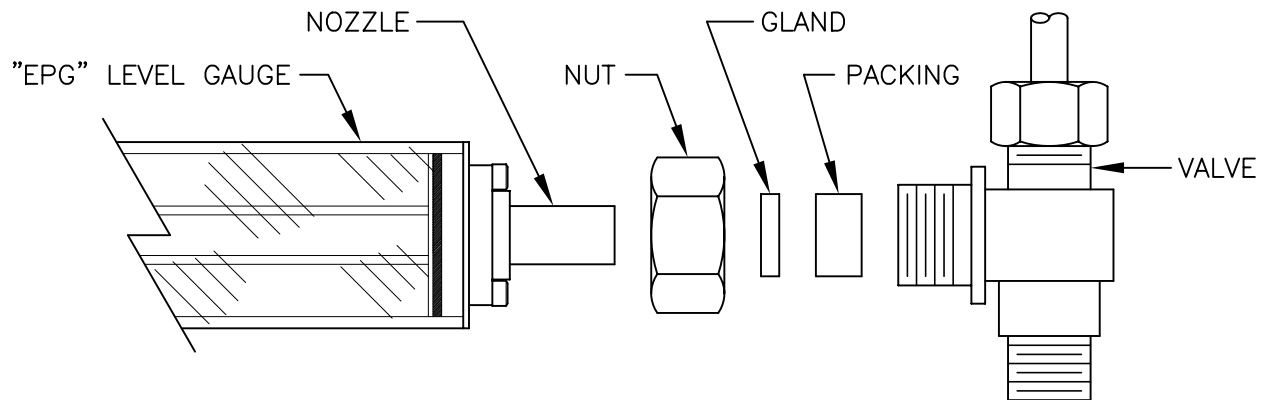
KENCO MODEL "EPG" LEVEL GAUGE INSTALLATION INSTRUCTIONS

ENSURE THAT GAUGE GLASS VALVES ARE CLOSED IF REPLACING AN EXISTING VESSEL SIGHT GLASS.

REMOVE GLASS PACKING NUT, GLAND, AND PACKING FROM GAUGE GLASS VALVE SET. LOOSENING GLASS PACKING NUT MAY BE THE ONLY OPERATION REQUIRED ON SOME VALVES REQUIRING MINIMAL GLASS ENGAGEMENT.

IMPORTANT: LOOSENING OR REMOVAL OF GAUGE GLASS VALVE PACKING NUTS SHOULD BE DONE CAREFULLY IF REPLACING AN EXISTING PRESSURIZED VESSEL SIGHT GLASS.

PLACE GLASS PACKING NUT, GLAND, AND PACKING ONTO 5/8" OR 3/4" DIAMETER NOZZLE ON EACH END OF KENCO MODEL "EPG" LIQUID LEVEL GAUGE. PUSH GLASS PACKING ONTO NOZZLE AS FAR AS IS REQUIRED FOR PACKING NUT OR GLAND TO BOTTOM OUT ON LEVEL GAUGE END PLATES. IT MAY BE DESIRABLE TO LUBRICATE PACKING PRIOR TO ASSEMBLY TO ENSURE EASY INSTALLATION.



ENSURE THAT GAUGE GLASS VALVE SIGHT TUBE CONNECTIONS ARE LINED UP AS CLOSE AS POSSIBLE.

INSERT UPPER NOZZLE OF LEVEL GAUGE ASSEMBLY INTO STUFFING BOX OF UPPER GAUGE GLASS VALVE AS FAR AS IT WILL GO AND THEN SWING LOWER END OF LEVEL GAUGE ASSEMBLY OVER UNTIL LOWER NOZZLE IS ALIGNED WITH CENTER OF LOWER GAUGE GLASS VALVE STUFFING BOX.

INSERT LOWER NOZZLE OF LEVEL GAUGE ASSEMBLY INTO LOWER GAUGE GLASS VALVE STUFFING BOX UNTIL END OF NOZZLE RESTS ON GLASS STOP INSIDE VALVE.

THREAD LOWER GAUGE GLASS VALVE PACKING NUT ONTO VALVE AND TIGHTEN.

HOLD LEVEL GAUGE ASSEMBLY DOWN FIRMLY IN PLACE AND THREAD UPPER GAUGE GLASS VALVE PACKING NUT ONTO VALVE AND TIGHTEN.

IMPORTANT: HOLDING GAUGE ASSEMBLY FIRMLY IN PLACE WHILE TIGHTENING VALVE PACKING NUTS IS RECOMMENDED TO PREVENT PULLING NOZZLE CONNECTIONS ON EACH END OF LEVEL GAUGE OFF OF SIGHT TUBE.

KENCO MODEL "EPG" LEVEL GAUGE OPERATING INSTRUCTIONS

THE KENCO MODEL "EPG" LEVEL GAUGE STANDARDLY HAS A 5/8" O.D. TUBULAR GLASS SIGHT TUBE AND CAN STAND MINIMAL SHOCK. TO AVOID THERMAL SHOCK ON TUBULAR GLASS, CONNECTING GAUGE GLASS VALVES SHOULD BE OPENED SLOWLY TO ALLOW GLASS TEMPERATURE/PRESSURE TO EQUALIZE WITH VESSEL.

KENCO MODEL "EPG" LEVEL GAUGE MAINTENANCE INSTRUCTIONS

GAUGE SHOULD BE REMOVED FROM SERVICE FOR PROPER CLEANING. REMOVING LEVEL GAUGE FROM OPERATION SHOULD BE UNDERTAKEN BY QUALIFIED PERSONNEL WHO ARE FAMILIAR WITH GAUGE GLASS VALVES AND THEIR OPERATION.

IMPORTANT: GAUGE SHOULD NOT BE STEAM CLEANED. SHIELD ENCLOSING SIGHT TUBE IS MADE OF CLEAR POLYCARBONATE AND WILL LIKELY BE DAMAGED SHOULD THIS OCCUR.