

Combination Low Water Cut-Off/Pump Controllers For Steam Boilers

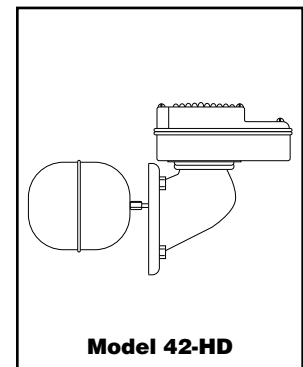
Series 42

Low Water Cut-Off/Pump Controllers



Replacement Head Mechanisms

For Model	Repl. Head Model No.	Part Number	Description	Weight lbs. (kg)
42	42-HD	129500	Head mechanism	7.5 (3.4)
42-A				



Components (shown on page 21)

Item Number	Part Number	Model Number	Description	Weight lbs. (kg)
1	348300	SA150-125	Switch, 2 wire	0.3 (.14)
2	341300	SA42-125	Switch, 2 wire	0.3 (.14)
3	302600	CO-12	Head gasket	0.1 (.05)
4*	328300	MA-159	Quick hook-up fittings (includes items 5, 6, 7)	6.0 (2.7)
5*	351800	SA259-24	Upper quick hook-up fittings	1.7 (.77)
6*	349500	SA159-24	Lower quick hook-up fittings	1.7 (.77)
7*	349400	SA159-17	Black "Y" assembly	3.0 (1.4)

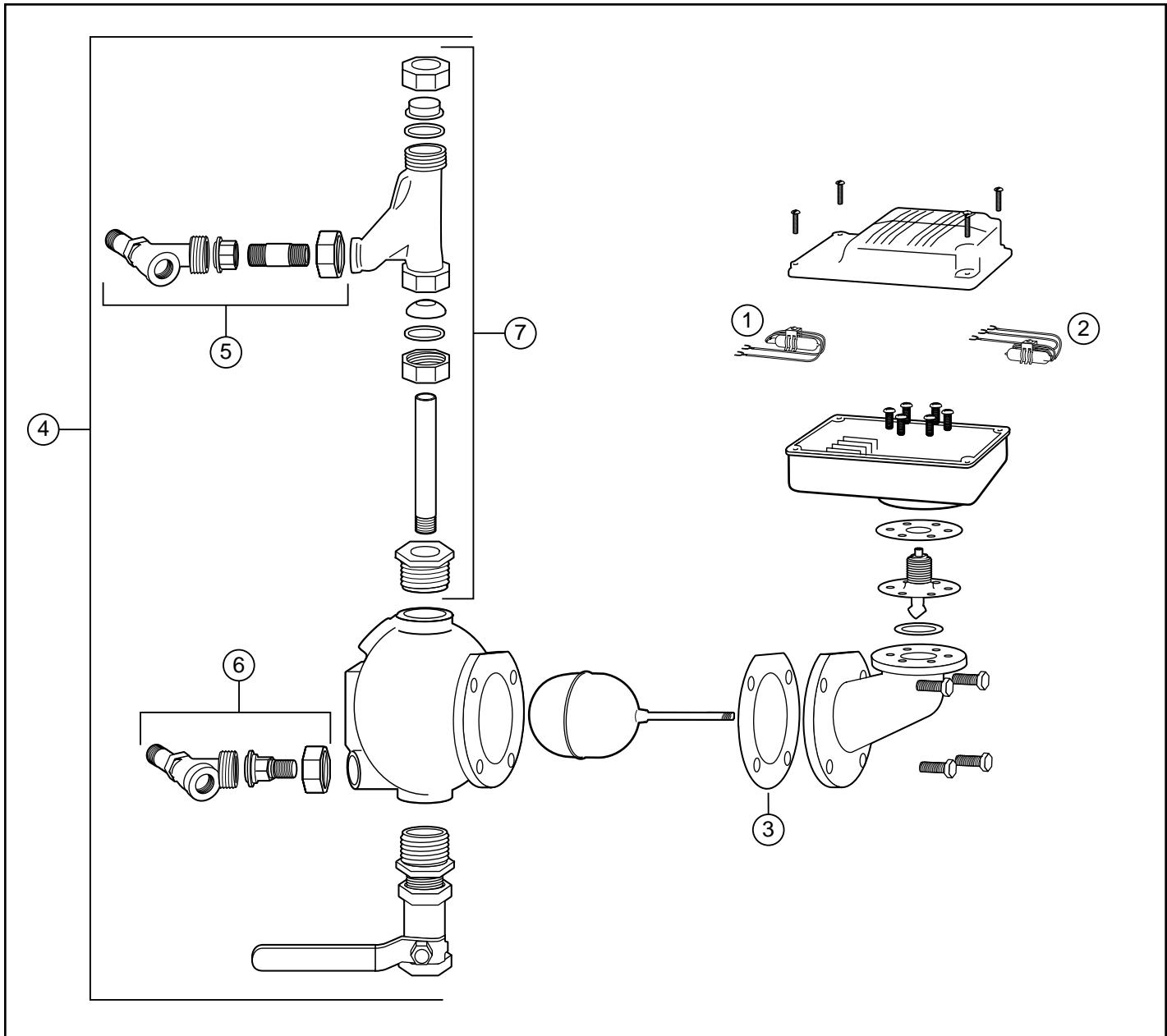
* Available for 42-A models only.

Combination Low Water Cut-Off/Pump Controllers For Steam Boilers

Series 42 (continued)

Low Water Cut-Off/Pump Controllers

Components



BOILER CONTROLS