

MAXOS® STANDARD FLAT GAGE GLASS – BOROSILICATE

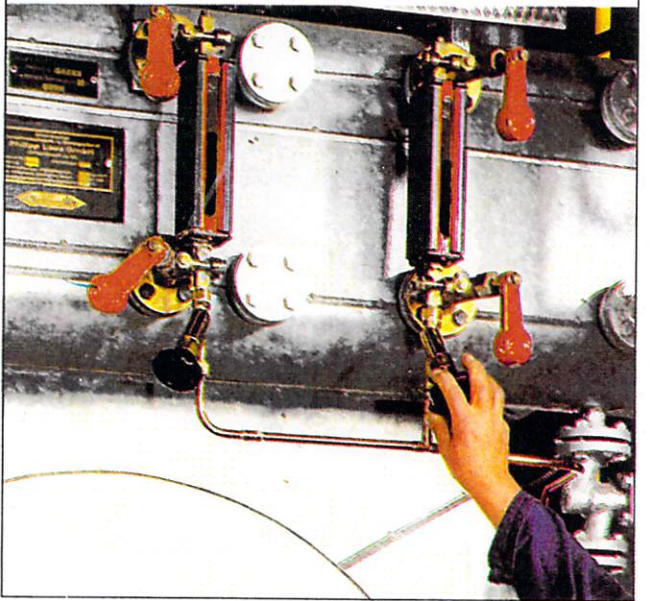
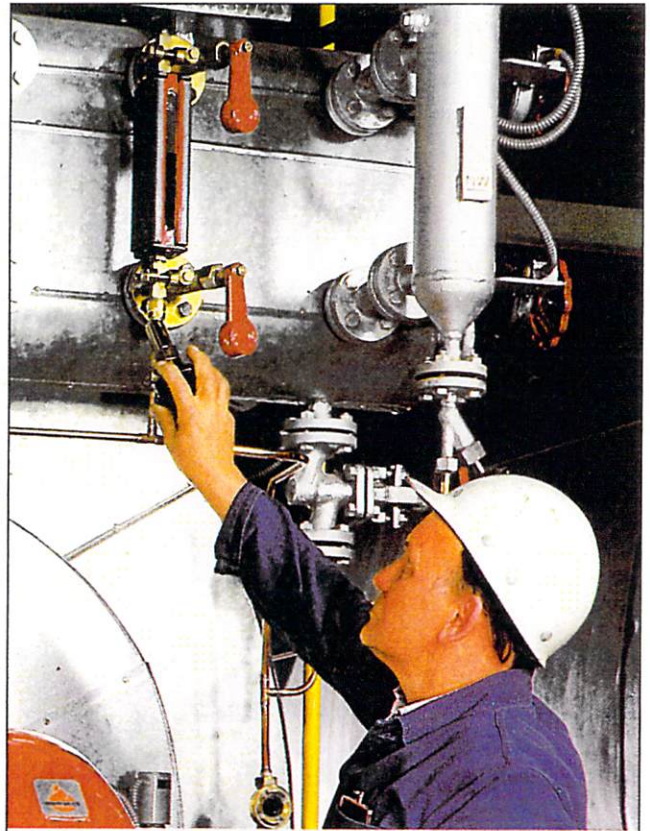
MAXOS is manufactured from a special 8488 formulated borosilicate glass, characterized by low coefficient of expansion, high chemical durability and exceptional homogeneity.

The critical dimensions and glass characteristics of each piece of MAXOS are checked at every stage of production to insure that the glasses conform to stringent specifications. These multistage quality controls assures that MAXOS can be used with confidence.

Our attention to quality and safety leads OEM plant managers, safety engineers and maintenance personnel to choose MAXOS again and again for their gage glass requirements.

MAXIMUM RECOMMENDED WORKING PRESSURE					
TYPE Standard	S I Z E	LENGTH INCHES (+0 / -.039)	Steam Boiler, No Mica Maximum Pressures at 470°F	Steam Boiler, Mica Protected Maximum Pressures at 608°F	Non-Steam Service Maximum Pressures at 100°F
Plain Width 1.300" – 1.339" Thickness .661" – .689" Flatness .005"	1	4 1/2"	500 psig	1000 psig	4000 psig
	2	5 1/2"			
	3	6 1/2"			
	4	7 1/2"			
	5	8 5/8"			
	6	9 7/8"			
	7	11"			
	8	12 5/8"			
	9	13 3/8"			
High Pressure Width 1.300" – 1.339" Thickness .661" – .689" Flatness .002"	1	4 1/2"	500 psig	1500 psig	5000 psig
	2	5 1/2"			
	3	6 1/2"			
	4	7 1/2"			
	5	8 5/8"			
	6	9 7/8"			
	7	11"			
	8	12 5/8"			
	9	13 3/8"			
Reflex Width 1.300" – 1.339" Thickness .661" – .689" Flatness .005"	1	4 1/2"	500 psig	Mica not used with Reflex Gage Glass	4000 psig
	2	5 1/2"			
	3	6 1/2"			
	4	7 1/2"			
	5	8 5/8"			
	6	9 7/8"			
	7	11"			
	8	12 5/8"			
	9	13 3/8"			

SERVICE LIMITATIONS		
SATURATED STEAM OR HOT WATER SERVICE	MAXIMUM POUNDS PER SQUARE INCH (PSIG)	MAXIMUM TEMPERATURE FAHRENHEIT (°F)
NO MICA PROTECTION		
PLAIN	500 psig	470°F
HIGH PRESSURE	500 psig	470°F
REFLEX	500 psig	470°F
MICA PROTECTION		
PLAIN	1,000 psig	608°F
HIGH PRESSURE	1,500 psig	608°F
NON-STEAM, NON-CORROSIVE SERVICE		
NO MICA PROTECTION		
PLAIN	4,000 psig	100°F**
HIGH PRESSURE	5,000 psig	100°F**
REFLEX	4,000 psig	100°F**



** See page 3 for maximum corresponding temperatures, pressures and service limitations other than 100°F

Glass is frequently used in gages manufactured by Penberthy, Daniels, Jerguson and Clark-Reliance.

IMPORTANT NOTE: Regardless of the glass rating, never exceed the gage manufacturer's pressure limitations.

For further information refer to the gage manufacturer's installation, operation and maintenance instruction manual

Maxos. is a registered trademark of Schott Glaswerke Mainz, Germany