

LIQUID LEVEL GAUGES



4400 SERIES LEVEL GAUGE CLOSE-MOUNT LEVEL GAUGE

APPLICATION:

The KENCO close-mount level gauge is ideally suited for applications in which the level gauge must be mounted with a minimum of protrusion from the tank. Typical applications include offshore or corrosive atmospheres, packaged hydraulic equipment, steel mill pumps, panel boards, surge tanks, radiator fluid levels.

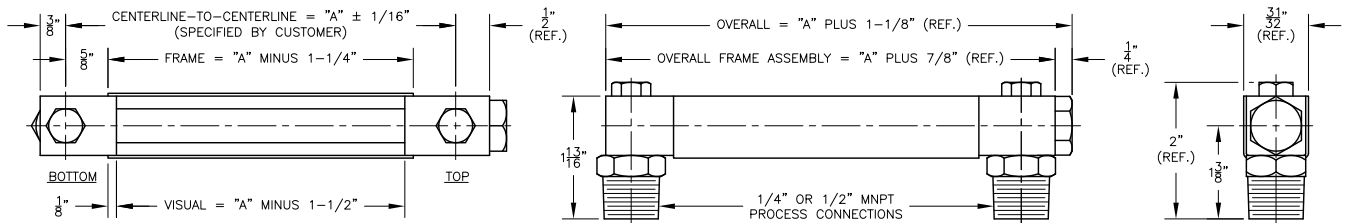
The design of these gauges affords easy installation. Simply install the male thread adapter into the tank connection and then slide the gauge frame over these adapters and bolt gauge into place. The glass is protected from breakage by the gauge housing.

FEATURES

- Redline glass for easy observation of fluid level
- Metal frame on three sides protects glass
- Easy installation—no pipe unions and/or threaded nipples required
- 1/4" or 1/2" connections mount directly into FNPT process connection



4400 SERIES LEVEL GAUGE



ORDERING SYSTEM

4400 Series Level Gauge

REQUESTED BY: _____ COMPANY: _____

ADDRESS: _____ CITY: _____ STATE: _____ ZIP: _____

PHONE: _____ FAX: _____ EMAIL: _____

Gauge Style

44M25=1/4" MNPT
44M50=1/2" MNPT

Center-to-Center Dimension (inches)

Material of Construction

B=Nickel Plated Brass
S=316 Stainless Steel

Seal Material

V=Fluorocarbon
A=Aflas
B=Buna-N
E=Ethylene Propylene

Sight Tube Option

HPRL=1/2" O.D. Redline Glass

Maximum Working Pressure (PSIG)

Maximum Operating Temperature (°F)

Steam

NS=Non-Steam Application

• Example Order Number: 44M50-22-S-B-RL-ATM-150-NS