

LIQUID LEVEL GAUGES

8800 SERIES BULK TANK GAUGE WITH 90 DEGREE CONNECTIONS



APPLICATIONS:

For low to medium pressure applications up to 500 psig, including oil or fuel storage tanks, cooling tower water tanks, and boiler feedwater tanks.

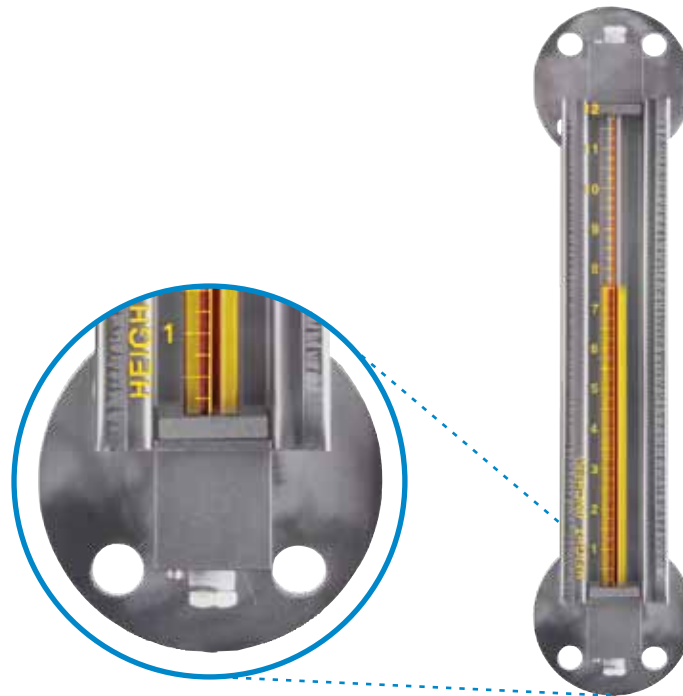
FEATURES

The 8800 Series Level Gauge features 90 degree connections for ease of installation. The Gauge is fitted with inline 1/4" FNPT vent and drain connections. Vent and drain connections are inline for routine sight glass maintenance.

The centerline dimensional tolerance is $\pm 1/16"$. This assures that the gauge will fit the mounting connection of the tank.

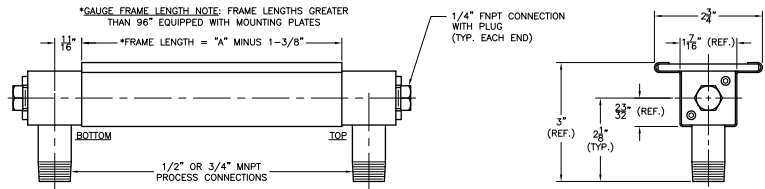
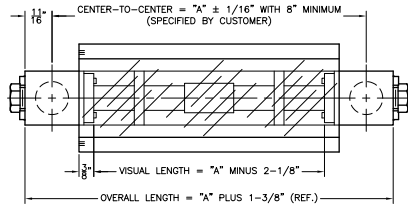
The sight tube of the 8800 Series Level Gauge is totally protected. Three sides of the gauge are enclosed with a metal frame, while the face of the gauge is protected with a polycarbonate shield. This shield can be custom calibrated to read tank volume or any other calibration. Refer to the Shield Specifications on page 12 to see the assortment of standard shield options.

The gauge frame is available in carbon steel or 304 stainless steel. A wide variety of wetted materials are available, including carbon steel, 316 stainless steel, alloy 20, Hastelloy C-276, PVC, CPVC, Kynar, and high density polyethylene.

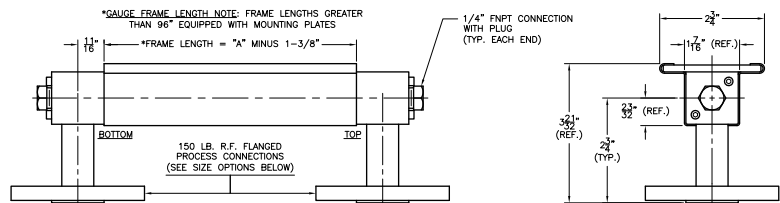
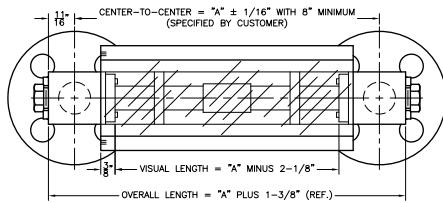


8800 Bulk Tank Gauge with
Optional Flange Connections

8800 SERIES LEVEL GAUGE WITH THREADED PROCESS CONNECTIONS



8800 SERIES LEVEL GAUGE WITH FLANGE CONNECTIONS



• Drawings above represent models with metal process connections.

ORDERING SYSTEM 8800 Series Level Gauge

REQUESTED BY: _____ COMPANY: _____

ADDRESS: _____ CITY: _____ STATE: _____ ZIP: _____

PHONE: _____ FAX: _____ EMAIL: _____

88				
Gauge Style 88=Gauge with 90° Connections	Process Connections M50=1/2" MNPT M75=3/4" MNPT F50=12" FNPT F75=3/4" FNPT FL50=1/2" 150# R.F. Flange FL75=3/4" 150# R.F. Flange FL10=1" 150# R.F. Flange FL15=1.5" 150# R.F. Flange FL20=2" 150# R.F. Flange	Center-to-Center Dimension (inches)	Material of Construction C=Zinc Plated Carbon Steel A=Stainless Steel PC=PVC Wetted Parts w/Carbon Steel Frame PS=PVC Wetted Parts w/Stainless Steel Frame Other (Please Specify)	Seal Material V=Fluorocarbon A=Aflas B=Buna-N T=FEP Encapsulated Silicone E=Ethylene Propylene
Shield Options* L=Clear Polycarbonate H=Height Scale RH=Rate Height Scale MH=Metric Height Scale MRH=Metric Rate Height Scale M=Expanded Metal Guard	Sight Tube Options** GS=5/8" O.D. Glass (Standard) RL=5/8" O.D. Redline Glass	Maximum Working Pressure (PSIG)	Maximum Operating Temperature (°F)	Steam S=Steam Application NS=Non-Steam Application

• Example Order Number: 88M50-68-PSTMH-GS-150-120-NS

* See page 12 for shield descriptions

** Based on application data provided, KENCO will select the appropriate sight tube material, i.e. high pressure glass.