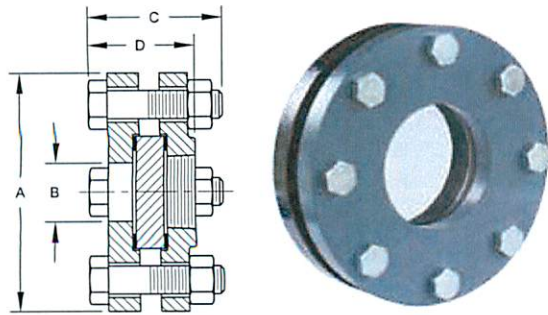


SIGHT WINDOWS

KENCO Sight Windows are used to provide direct reading of process liquids. They can be mounted directly to the vessel wall, or to pipe, in a variety of configurations.

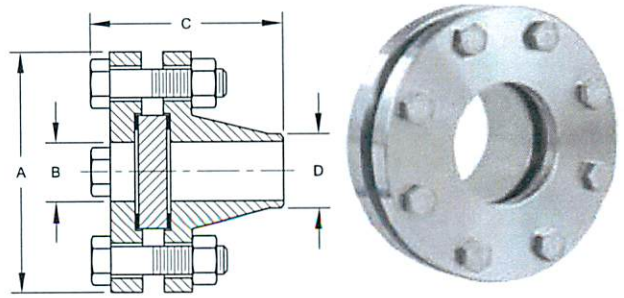
PRODUCT DIMENSIONS

Threaded Flange Window (TFW)



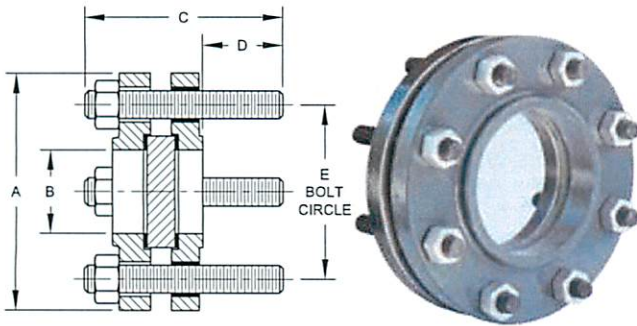
Size	A	B	C (STD)	C (ANSI)	D (STD)	D (ANSI)
1"	4.25"	1.05"	2.61"	2.61"	1.80"	1.80"
1.5"	5.00"	1.61"	2.86"	2.86"	2.24"	2.24"
2"	6.00"	2.07"	3.19"	3.44"	2.51"	2.63"
3"	7.50"	3.07"	3.94"	3.94"	3.10"	3.10"
4"	9.00"	4.03"	3.94"	3.94"	3.19"	3.19"
6"	11.00"	6.07"	4.27"	4.77"	3.59"	4.09"
8"	13.50"	7.98"	4.52"	5.02"	4.09"	4.59"

Weld Neck Window (WNW)



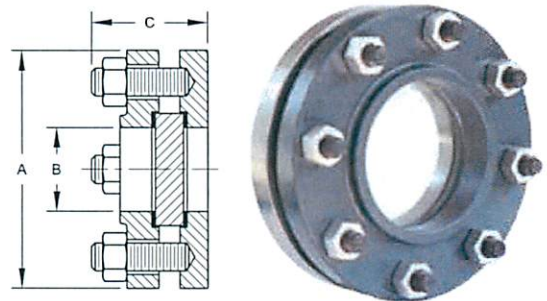
Size	A	B	C (STD)	C (ANSI)	D
1"	4.25"	1.05"	3.31"	3.31"	1.32"
1.5"	5.00"	1.61"	3.81"	3.81"	1.90"
2"	6.00"	2.07"	4.06"	4.19"	2.38"
3"	7.50"	3.07"	4.69"	4.69"	3.50"
4"	9.00"	4.03"	4.94"	4.94"	4.50"
6"	11.00"	6.07"	5.56"	6.06"	6.63"
8"	13.50"	7.98"	6.44"	6.94"	8.63"

Bolted Flange Window (BFW)



Size	A	B	C (STD)	C (ANSI)	D	E	STUD SIZE	STUD QTY.
1"	4.25"	1.38"	3.75"	3.75"	1.50"	3.13"	1/2"-13	4
1.5"	5.00"	1.97"	4.25"	4.25"	1.63"	3.88"	1/2"-13	4
2"	6.00"	2.46"	4.75"	4.88"	1.81"	4.75"	5/8"-11	4
3"	7.50"	3.60"	5.38"	5.38"	1.94"	6.00"	5/8"-11	4
4"	9.00"	4.60"	5.38"	5.38"	1.94"	7.50"	5/8"-11	8
6"	11.00"	6.75"	5.88"	6.38"	2.19"	9.50"	3/4"-10	8
8"	13.50"	8.75"	6.50"	7.00"	2.31"	11.75"	3/4"-10	8

Flat Plate Window (FPW)



Size	A	B	C (STD)	C (ANSI)
1"	4.25"	1.38"	2.41"	2.41"
1.5"	5.00"	1.97"	2.78"	2.78"
2"	6.00"	2.46"	3.09"	3.09"
3"	7.50"	3.60"	3.53"	3.53"
4"	9.00"	4.60"	3.53"	3.53"
6"	11.00"	6.75"	3.84"	4.34"
8"	13.50"	8.75"	4.47"	4.97"

Pressure Ratings

Pressure Style	Max Temp.	Max. Press.
Standard	300°F @ 150 psig	150 psig @ 100°F
ANSI	400°F @ 180 psig	275 psig @ 100°F

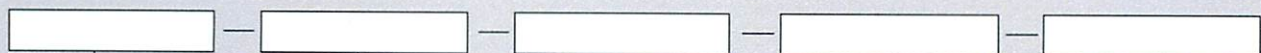
Seal Temperature Ratings

Material	Temperature
Neoprene	-20°F to 200°F
PTFE Envelope – Neoprene Filler	-20°F to 200°F
Fluorocarbon	-15°F to 400°F
PTFE Envelope – Fluorocarbon Filler	-15°F to 400°F
Non-Asbestos (ANSI Only)	0°F to 400°F

ORDERING SYSTEM

Sight Windows

REQUESTED BY: _____ COMPANY: _____
 ADDRESS: _____ CITY: _____ STATE: _____ ZIP: _____
 PHONE: _____ FAX: _____ EMAIL: _____



Window Style

BFW=Bolted Flange
 FPW =Flat Plate
 TFW =Threaded Flange
 WNW=Weld Neck

Flange Size

10=1"
 15=1-1/2"
 20=2"
 30=3"
 40=4"
 60=6"
 80=8"

Sight Window Material

C=Carbon Steel
 W=316 Stainless Steel
 Wetted w/Carbon
 Steel Cover Flange
 A=316 Stainless Steel
 w/Stainless Steel
 Cover Flange
 X=Other (Specify)

Wetted Gasket Material

N=Neoprene
 TN=PTFE Envelope-
 Neoprene Filler
 V=Fluorocarbon
 TV=PTFE Envelope-
 Fluorocarbon Filler
 A=Non-Asbestos
 Contact Factory
 for other materials

Pressure Classification

S=Standard
 A=ANSI