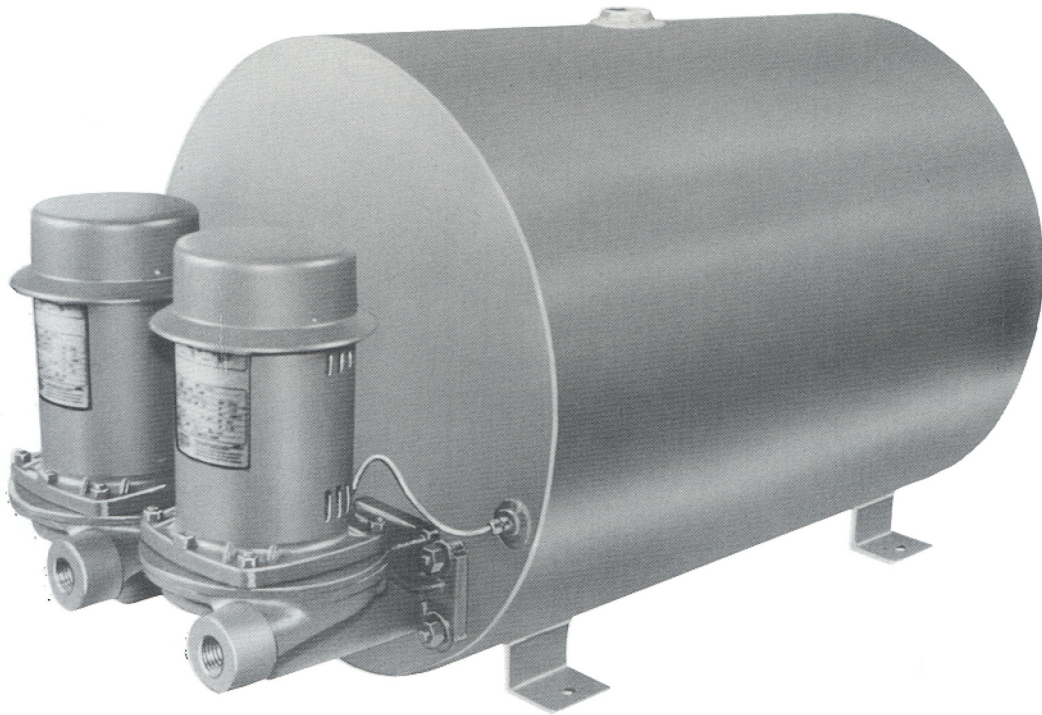


LOCKWOOD®

TYPE BMX BOILER FEED SYSTEMS



ILLUSTRATED WITH OPTIONAL EQUIPMENT

BF -
BMX
11 - 08

LOCKWOOD TYPE - BMX BOILER FEED

OVERVIEW

STANDARD FEATURES

Lockwood Type BMX boiler feed systems are offered as standard for boilers up to 125 HP and 40 PSIG pump pressures in simplex and duplex configurations. Custom systems are also available.

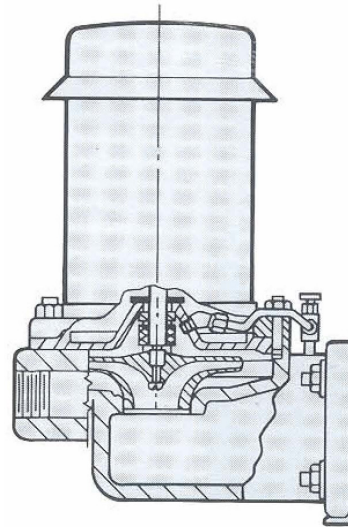
Receivers are constructed of heavy steel plate with necessary reinforced tank connections, including internally unrestrictable vent for added safety. For general applications receiver capacity is sized to allow approximately 1 gallon of nominal capacity per boiler horsepower (smaller receivers may be utilized for high make-up water conditions; larger receivers are recommended for high condensate return conditions). Each system includes a gauge glass assembly and a makeup water feeder (internal mechanical type). Simplex units may be field converted to duplex. Pumps are selected for intermittent service unless otherwise requested.

TYPE BMX PUMPS

Type BMX pumps offer outstanding value and proven reliability. Pumps are vertical, centrifugal design with stainless steel shafts and bronze impellers (improved NORYL on 20 psi unit). All pumps rated to handle hot condensate up to 200°F. Mechanical seals are rated for 220 degrees F and are re-circulated to pump suction to insure adequate lubrication at all times. Type BMX pumps, being of centrifugal design, have low wear characteristics, and vertical configuration requires minimal floor space. Pumps have low maintenance, easily serviceable design-any part subject to normal wear is readily accessible. Impeller and mechanical seal can be serviced without disturbing system piping or electrical connections. Heavy duty, drip-proof, 3450 RPM, 60 Hz motors are designed for continuous duty with pre-lubricated, shielded ball bearings and stainless steel shaft. Single phase motors have built-in overload protection.

ACCESSORIES / OPTIONS

- TEFC Motors
- Magnetic Starters/Custom Panels
- H-0-A Switches
- Pilot Lights
- Control Circuit Transformers
- Electrical Alternators
- Level Alarm Switches
- Thermometers
- Pressure Gauges
- Internal Dispersion Tubes
- Steam Preheat Assemblies
- Pump Re-Circulation Orifices
- Corrosion Inhibitors (Magnesium Anode)
- Internal Tank Linings
- Galvanized Tanks
- Tank Insulation



TYPICAL BMX PUMP
CROSSECTION

LOCKWOOD TYPE - BMX BOILER FEED SELECTION CHART

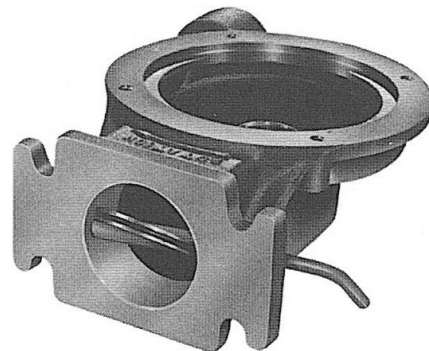
BOILER HP	PUMP GPM	DISC. PRESS (PSIG)	MOTOR HP	SIMPLEX			DUPLEX			REC. CAP. (GAL.)
				SINGLE PHASE 115 / 230	THREE PHASE 230 / 460	WGT.	SINGLE PHASE 115 / 230	THREE PHASE 230 / 460	WGT.	
0 - 50	9	20	1/3	BMX49S2 - 1	BMX49S2 - 3	200	BMX49D2 - 1	BMX49D2 - 3	235	49
		30	1/2	BMX49S3 - 1	BMX49S3 - 3	205	BMX49D3 - 1	BMX49D3 - 3	241	49
		40	3/4	BMX49S4 - 1	BMX49S4 - 3	208	BMX49D4 - 1	BMX49D4 - 3	247	49
50 - 75	12	20	1/3	BMX71S2 - 1	BMX71S2 - 3	240	BMX71D2 - 1	BMX71D2 - 3	275	71
		30	1/2	BMX71S3 - 1	BMX71S3 - 3	245	BMX71D3 - 1	BMX71D3 - 3	281	71
		40	3/4	BMX71S4 - 1	BMX71S4 - 3	248	BMX71D4 - 1	BMX71D4 - 3	287	71
75 - 125	18	20	1/3	BMX117S2 - 1	BMX117S2 - 3	332	BMX117D2 - 1	BMX117D2 - 3	367	117
		30	1/2	BMX117S3 - 1	BMX117S3 - 3	332	BMX117D3 - 1	BMX117D3 - 3	373	117
		40	3/4	BMX117S4 - 1	BMX117S4 - 3	340	BMX117D4 - 1	BMX117D4 - 3	379	117



**VERTICAL CONFIGURATION
(Optional)**

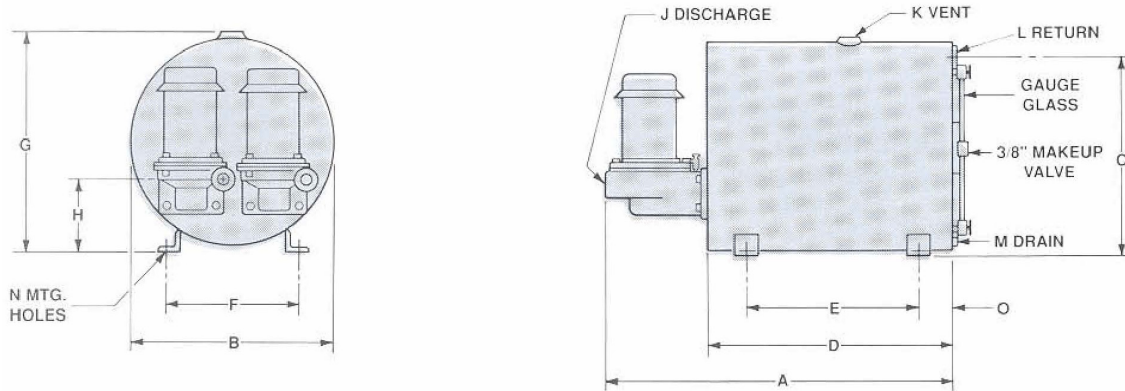
OPTIONAL SUCTION ISOLATION VALVE

An optional suction isolation valve is available for simplex and duplex units. When installed between the pump and receiver on simplex units, it allows the pump motor assembly to be removed without draining the receiver. On duplex units, it permits one pump to be removed while the other one continues to operate without interrupting system operation.



LOCKWOOD TYPE - BMX BOILER FEED

RECEIVER DIMENSIONS



DIMENSIONAL DATA

RECEIVER SIZE	DIMENSIONS (INCHES)														
	A	B	C	D	E	F	G	H	J	K	L	M	N	O	
49 GAL	41	24	20.7	30	21	15	25	5.5	1	1.25	2.5	3/4	5/8	4-1/2	
71 GAL	47	24	22.5	36	27	16	25	5	1	1.5	3	3/4	5/8	4-1/2	
117 GAL	71	24	22.5	60	30	19	25	5	1	2	4	3/4	5/8	15	
209 GAL	71	32	29	60	48	28	33	5	1	2	5	3/4	5/8	6	

SPECIFICATIONS

Furnish and Install where shown on plans, one (1) model _____ (simplex) (duplex) packaged boiler feed system as manufactured by Lockwood Products, Inc. (Atlanta, Georgia). The system shall be designed to deliver feedwater to _____ (number), _____ horsepower boiler(s) operating at _____ PSIG. Furnish _____ gallon receiver of heavy steel plate with necessary threaded pipe connections (including unrestrictable vent), mechanical make-up water assembly and gauge glass assembly.

Furnish _____ (number) Type BMX Lockwood boiler feed pump(s), each having a capacity _____ of GPM of 200°F. water at _____ PSIG. Pump(s) shall be of the vertical, centrifugal design with stainless steel shaft and mechanical seal rated at 220°F. Pump(s) (less volute) shall be removable from system without disturbing discharge piping. Each pump shall be vertically mounted and close-coupled to a _____ horsepower, 3500 rpm, _____ volt. _____ phase, 60 Hertz, (open drip-proof) (totally enclosed-fan cooled) motor.

All components of this system are to be provided by one manufacturer for single unit responsibility.

The specifications contained in this bulletin were effective at the time of publishing. Lockwood Products, Inc. reserves the right to discontinue products at any time or to change specifications or design without incurring any obligation.