

5000 SERIES

Boiler Feed Pumps - Steel Tank

Technical Specifications

Sterlco® 5000 Series Boiler Feed Units set new standards of performance. Reliable and efficient, each unit features heavy gauge, 3/16" steel receivers for long operating life.

In addition, 3450 RPM motors assure maximum efficiency while maintaining minimum motor horsepower. Available in a wide range of sizes, these U.S. made pumps have just the right accessories and options to meet your unique needs. What's more, a nationwide network of stocking distributors means fast, easy, year-round access to pumps and replacement parts.



Features

Standard Features

- Heavy gauge steel receivers
- Simplex or duplex construction
- Bronze fitted centrifugal pumps
- Energy efficient 3450 RPM motors
- "Sterl-Seal" ceramic pump seal (250°F)
- Heavy-duty make-up water valve
- Isolation valves
- Gauge Glass
- Wide range of options and accessories

Optional Features

- Stainless steel receivers
- Electric alternator for duplex units
- Thermometer
- Solenoid operated make-up water valve with reverse acting float switch
- McDonnel-Miller #21 make-up water valve
- Special motor construction such as totally enclosed, washdown duty and explosion proof is available
- 1750 RPM motors, larger pumping capacities and higher discharge pressures - consult factory
- Custom sized tanks available
- Complete NEMA 12 Control Panel

Product Features

Receiver:

Heavy gauge steel construction. Sizes ranging from 125 gallons up to 714 gallons. Narrow diameter, up to 250 gallons fit through standard door openings.

Motors:

Heavy-duty, ballbearing, close-coupled pump motors with stainless steel shaft. 3450 RPM for greater efficiency and more economical operation.

Make-up Water Valve:

Mechanical, plug mounted valve with stainless steel float. Rated up to 45 PSI inlet water pressure. At pressures exceeding 45 PSI, a PRV is required on the inlet cold water line.

Operation:

Boiler feed pump(s) are controlled by a water level controller mounted on the boiler. If condensate is lost or delayed in the system, it is automatically replaced in the receiver through the make-up water valve.

"SterlSeal" Pump Seal (A):

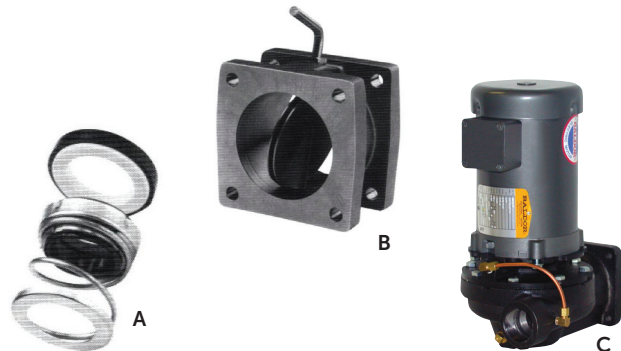
Features the ultimate in ceramic technology for exceptionally long life. Because the seal runs on the bronze impeller hub, the motor shaft is literally outside the pump. Consequently, the shaft is not exposed to corrosion by condensate. Rated for temperatures up to 250°F.

Isolation Valve (B):

Standard on 5000-JF Series. Allows removal of pump without draining the tank.

Centrifugal Pump (C):

Offers a wide range of pressures and GPM. Unique design features provide for ease of servicing.



Control Panel

Complete NEMA 12 Control Panel (Optional)

- Motor Circuit Protector
- HOA Selector Switch
- External Reset
- Control Circuit Transformer
- Pilot Light (pump running)
- Removable Mounting Plate and Terminal Strip in a Single NEMA 12 Enclosure
- Mounted and Wired with Single Point Power Connection.

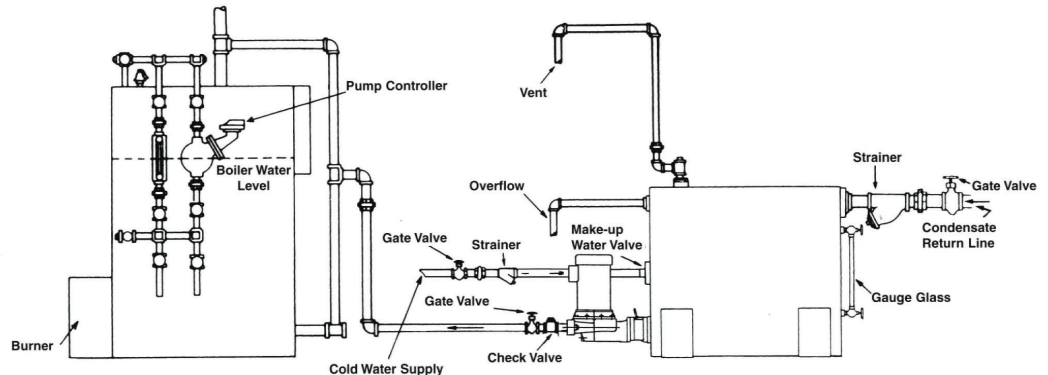
Specifications

5000 Series Engineering and Capacity Data

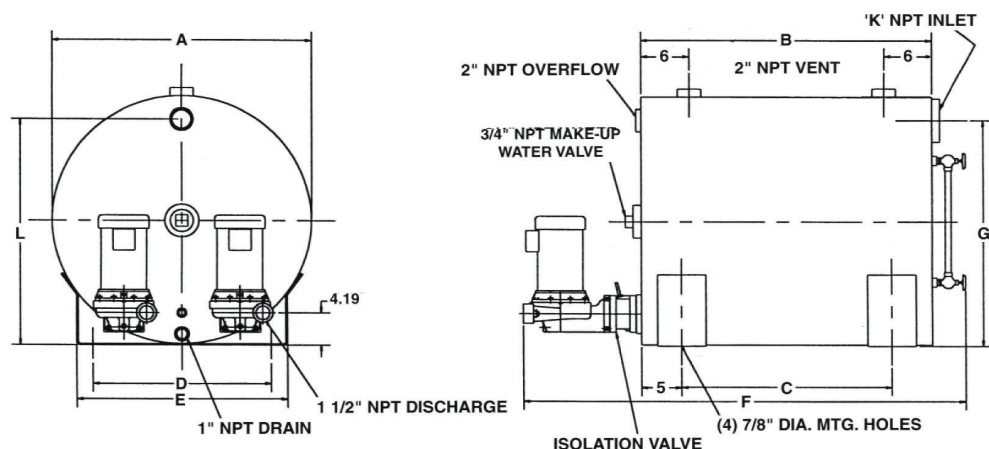
Boiler HP	Discharge Pressure PSI	Pump Capacity, GPM	Motor HP	Rec. Capacity, Gallons	Unit Model Number		Shipping Weight, lbs.	
					Simplex	Duplex	Simplex	Duplex
150	20	25	3/4	125	502150-JF	502150-JDF	570	665
	30		1		503150-JF	503150-JDF	590	685
	40		1-1/2		504150-JF	504150-JDF	600	695
	50		2		505150-JF	505150-JDF	615	710
200	20	30	3/4	146	502200-JF	502200-JDF	635	690
	30		1		503200-JF	503200-JDF	640	730
	40		1-1/2		504200-JF	504200-JDF	650	750
	50		2		505200-JF	505200-JDF	670	770
250	20	35	3/4	175	502250-JF	502250-JDF	800	870
	30		1		503250-JF	503250-JDF	805	875
	40		1-1/2		504250-JF	504250-JDF	815	885
	50		2		505250-JF	505250-JDF	840	910
300	20	45	1	210	502300-JF	502300-JDF	830	920
	30		1-1/2		503300-JF	503300-JDF	835	930
	40		1-1/2		504300-JF	504300-JDF	840	940
	50		2		505300-JF	505300-JDF	860	980
400	20	55	1-1/2	250	502400-JF	502400-JDF	900	995
	30		1-1/2		503400-JF	503400-JDF	905	1005
	40		2		504400-JF	504400-JDF	920	1020
	50		5		505400-JF	505400-JDF	930	1030
500	20	70	2	326	502500-JF	502500-JDF	975	1070
	30		2		503500-JF	503500-JDF	980	1075
	40		3		504500-JF	504500-JDF	990	1085
	50		5		505500-JF	505500-JDF	1045	1140
600	20	85	2	395	502600-JF	502600-JDF	1070	1170
	30		3		503600-JF	503600-JDF	1070	1170
	40		3		504600-JF	504600-JDF	1090	1190
	50		5		505600-JF	505600-JDF	1090	1190
700	20	100	2	470	502700-JF	502700-JDF	1235	1335
	30		5		503700-JF	503700-JDF	1245	1345
	40		5		504700-JF	504700-JDF	1245	1345
	50		5		505700-JF	505700-JDF	1295	1395

Sample Specification

Furnish and install, where indicated on plans, a Sterling 5000 Series (simplex, duplex, triplex...) boiler feed unit(s). Each pump shall deliver _____GPM at a discharge pressure of _____ PSI. The unit(s) shall be factory assembled and tested by the pump manufacturer and shall include a receiver, pump(s), make-up water valve, gauge glass, isolation valve(s) and accessories. The receiver shall have a capacity of _____ gallons and be of minimum 3/16" steel construction. Pump(s) shall be of the centrifugal type with two-piece enclosed brass impeller, cast iron housing, high temperature (250°F) mechanical seal and stainless steel motor shaft. The make-up water valve is to be a mechanical plug-type with a stainless steel float. A flat perforated brass strainer shall be provided at the inlet to the pump from the tank. The motor(s) shall be vertical, 3450 RPM, _____phase, _____volt, 60 cycle, _____H.P.



Product Diagrams



Gallon	A	B	C	D	E	F	G	K	L
125	32	36	26	22	26	54.88	29.19	3	29.19
146	32	42	32	22	26	60.88	29.19	3	29.19
175	32	50	40	22	26	68.88	29.19	3	29.19
210	32	60	50	22	26	78.88	29.19	3	29.19
250	32	72	62	22	26	90.88	29.19	3	29.19
326	44	50	40	34	38	68.88	40.69	4	41.19
395	44	60	50	34	38	78.88	40.69	4	41.19
470	44	72	62	34	38	90.88	40.69	4	41.19
564	48	72	62	38	42	90.88	44.69	4	45.19
595	54	60	50	44	48	78.88	50.69	4	51.19
714	54	72	62	44	48	90.88	49.69	6	51.19