

4600 SERIES

Boiler Feed Units - Steel Tank

Technical Specifications

Sterlco® 4600 Series Boiler Feed Units set new standards of performance. Reliable and efficient, each unit features heavy gauge, 3/16" steel receivers for long operating life.

In addition, 3450 RPM motors assure maximum efficiency while maintaining minimum motor horsepower. Available in a wide range of sizes, these U.S. made units have just the right accessories and options to meet your unique needs.



Features

Standard Features

- Heavy gauge steel receivers
- Simplex or duplex construction
- Stainless steel fitted centrifugal pumps
- Energy efficient 3450 RPM motors
- Automatic venting
- Carbon ceramic pump seal (300°F) with EPDM elastomers
- Heavy-duty make-up water valve
- Gauge glass
- Wide range of options and accessories

Optional Features

- Electric alternator for duplex units
- Thermometer
- Isolation valves
- Solenoid operated make-up water valve with reverse acting float switch
- Special motor construction, such as totally enclosed, washdown duty and explosion-proof is available
- Elevated tanks are available
- Complete NEMA 12 Control Panel

Product Features



Elevated Unit

Unit:

Completely factory assembled and tested. Simplex units have one receiver, one make-up water valve, and one vertical pump and motor assembly. Duplex units have 2 vertical pumps. All units are supplied with a gauge glass on the side of the receiver.

Motors:

Heavy-duty, ballbearing, close-coupled pump motors with stainless steel shaft. 3450 RPM for greater efficiency and more economical operation.

Make-up Water Valve:

Mechanical, plug mounted valve with stainless steel float. Rated up to 45 psi inlet water pressure. (A pressure reducing valve is required upon installation.)

Receiver:

Heavy gauge steel construction. All receivers of 45 gallon size and larger are supplied in duplex design, with one pump opening covered when a simplex design is specified.

Operation:

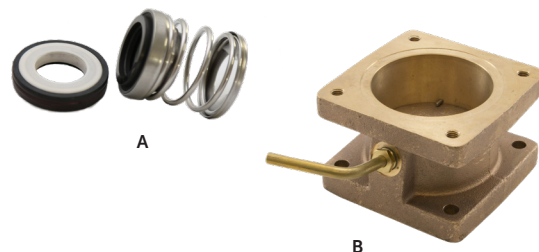
Boiler feed pump(s) are controlled by a water level controller mounted on the boiler. If condensate is lost or delayed in the system, it is automatically replaced in the receiver through the make-up water valve.

Pump Seal (A):

Features the ultimate in ceramic technology for exceptionally long life. Seal is carbon ceramic with EPDM elastomers. Rated for temperatures up to 300°F.

Isolation Valve (B):

Optional on 4600 Series Boiler Feed Units. Allows removal of pump without draining the tank.



Control Panel



Inside view of control panel

Complete NEMA 12 Control Panel (Optional)

- Motor Circuit Protector
- HOA Selector Switch
- External Reset
- Control Circuit Transformer
- Pilot Light (pump running)
- Removable Mounting Plate and Terminal Strip in a Single NEMA 12 Enclosure
- Mounted and Wired with Single Point Power Connection.

Specifications

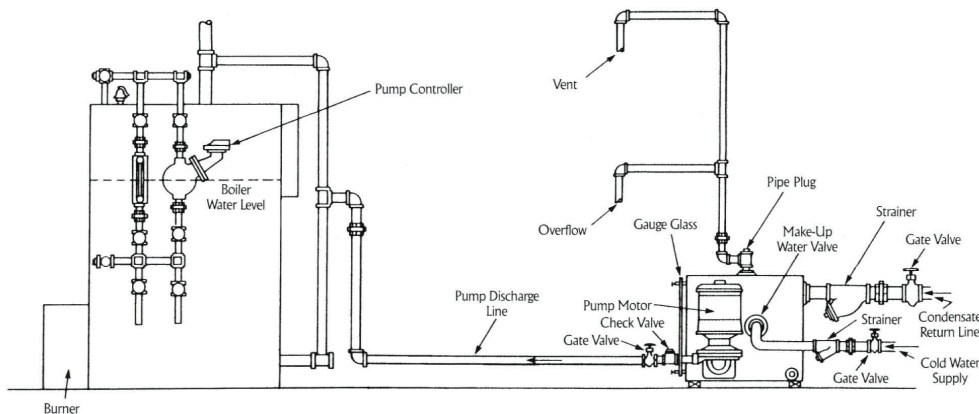
4600 Series Engineering and Capacity Data

Boiler HP	Discharge Pressure PSI	Pump Capacity, GPM	Motor HP	Rec. Capacity, Gallons	Unit Model Number		Shipping Weight, lbs.	
					Simplex	Duplex	Simplex	Duplex
15	20	3	1/2	30	4622-KF	4622-KDF	200	240
	30		3/4		4632-KF	4632-KDF	260	300
	40		1		4642-KF	4642-KDF	265	310
	50		1-1/2		4652-KF	4652-KDF	275	330
30	20	6	1/2	30	4624-KF	4624-KDF	200	240
	30		3/4		4634-KF	4634-KDF	260	300
	40		1		4644-KF	4644-KDF	265	310
	50		1-1/2		4654-KF	4654-KDF	275	330
45	20	9	1/2	45	4626-KF	4626-KDF	240	280
	30		3/4		4636-KF	4636-KDF	300	340
	40		1-1/2		4646-KF	4646-KDF	305	350
	50		1-1/2		4656-KF	4656-KDF	315	370
60	20	12	1/2	60	4628-KF	4628-KDF	275	335
	30		3/4		4638-KF	4638-KDF	335	395
	40		1-1/2		4648-KF	4648-KDF	340	405
	50		1-1/2		4658-KF	4658-KDF	350	425
75	20	15	1/2	95	46210-KF	46210-KDF	360	420
	30		1		46310-KF	46310-KDF	420	480
	40		1-1/2		46410-KF	46410-KDF	425	490
	50		2		46510-KF	46510-KDF	435	510
100	20	20	1/2	95	46215-KF	46215-KDF	360	420
	30		1		46315-KF	46315-KDF	420	480
	40		1-1/2		46415-KF	46415-KDF	425	490
	50		2		46515-KF	46515-KDF	435	510
150	20	30	3/4	120	46220-KF	46220-KDF	415	475
	30		1		46320-KF	46320-KDF	475	535
	40		1-1/2		46420-KF	46420-KDF	480	545
	50		3		46520-KF	46520-KDF	490	565

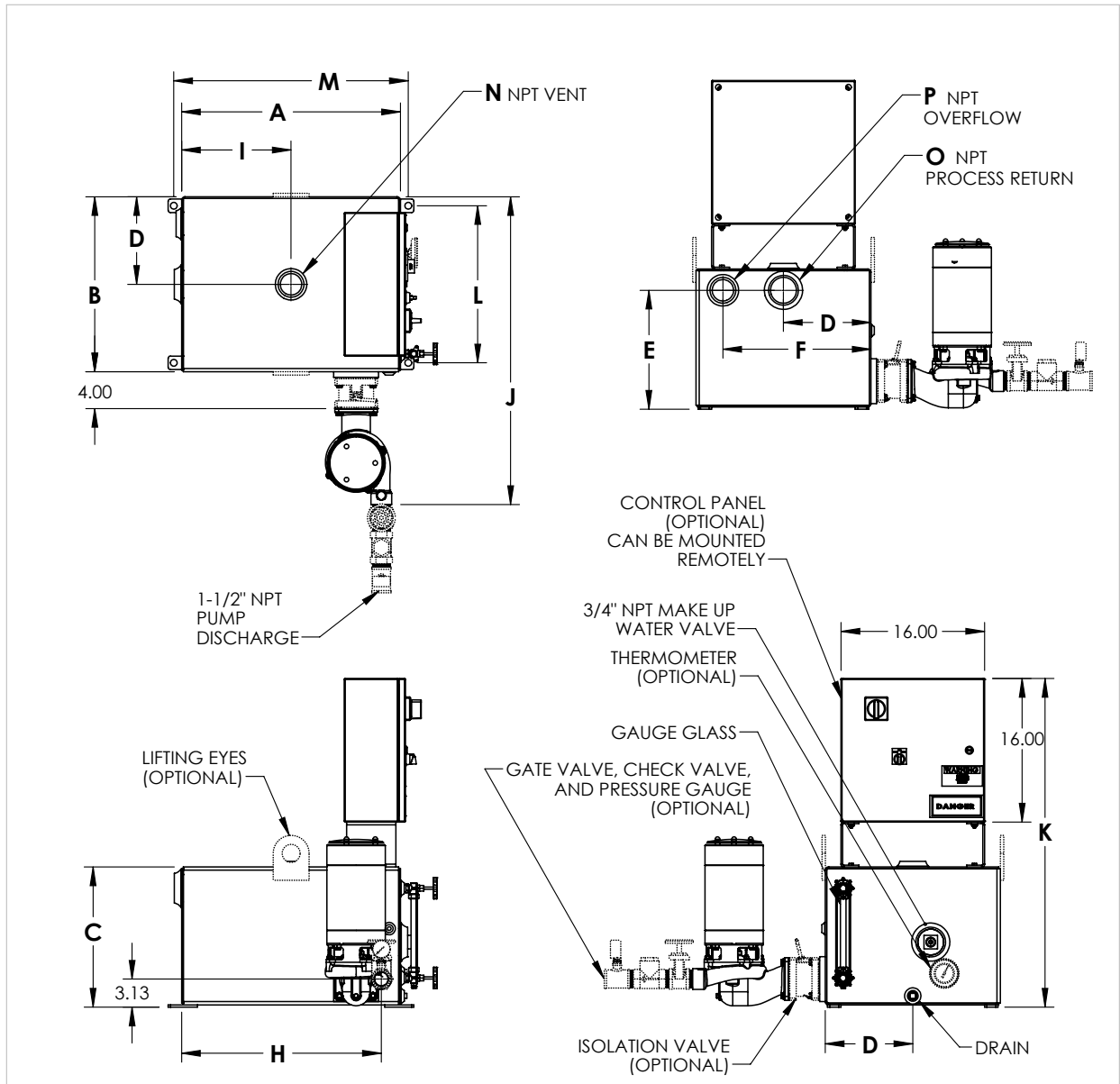
Sample Specification

Furnish and install, where indicated on plans, a Sterling 4600 Series (simplex or duplex) boiler feed unit(s). Each pump shall deliver _____ GPM at a discharge pressure of _____ PSI. The unit shall be factory assembled and tested by the pump manufacturer and shall include a receiver, pump(s), make-up water valve, gauge glass, and accessories.

The receiver shall have a capacity of _____ gallons and be of minimum 3/16" steel construction. Pump(s) shall be of the centrifugal type with one-piece enclosed stainless steel impeller, stainless steel inducer, cast iron housing, high temperature (300°F) mechanical seal and stainless steel motor shaft. The make-up water valve is to be a mechanical, plug-type with a stainless steel float. An optional inlet "Y" or basket strainer is recommended for installation on the tank return inlet for pump protection. The motor(s) shall be vertical, 3450 RPM, _____ phase, _____ volt, 60 cycle, _____ H.P.



Product Diagrams

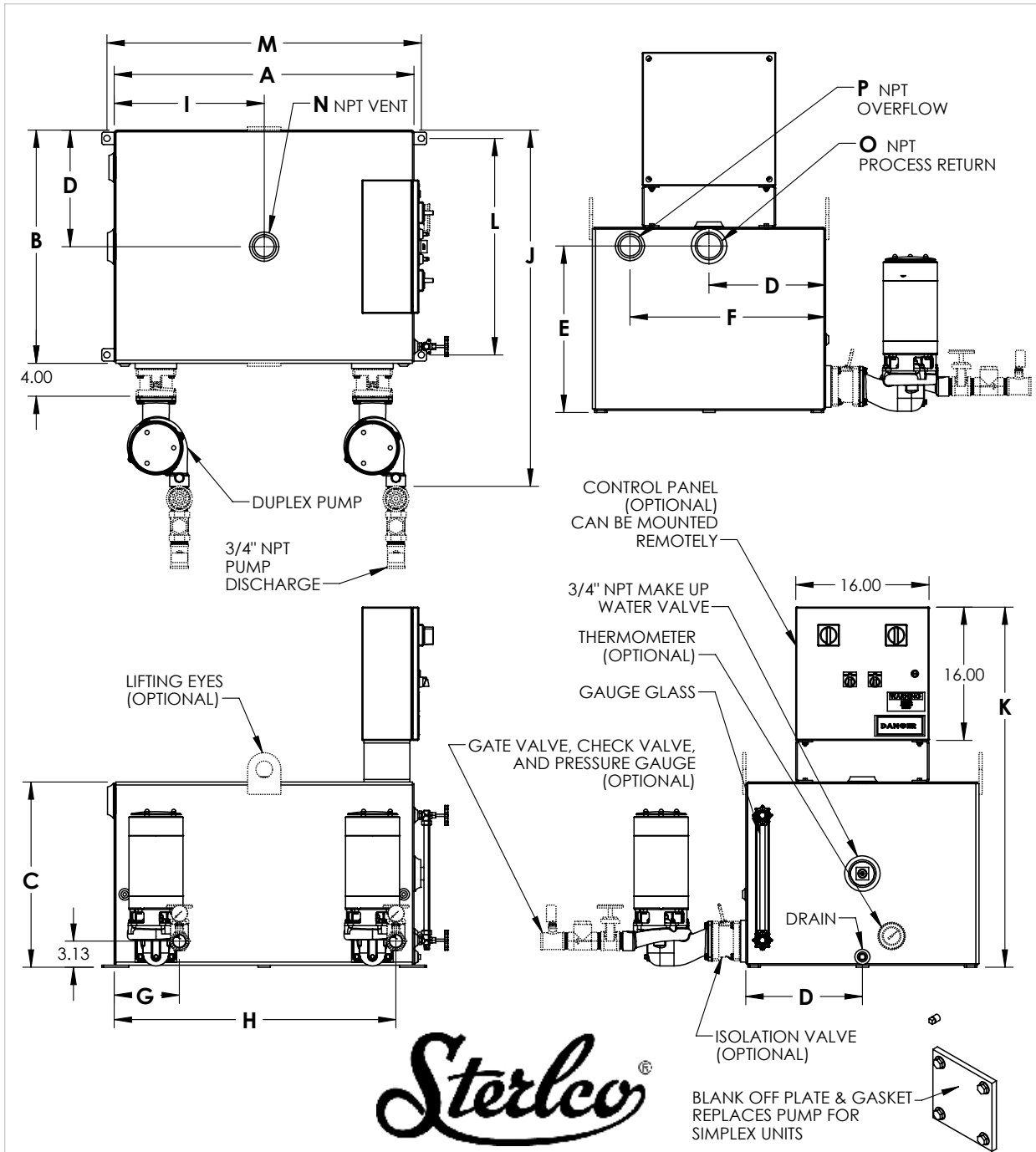


4600 "K" SERIES BOILER FEED UNIT RECEIVER MATERIAL: STEEL

RECEIVER SIZE	A	B	C	D	E	F	G	H	I	J	K	L	M	N	O	P	DRAIN
30 GAL	24.38	19.50	15.63	9.75	13.25	16.50		22.25	12.19	34.25	35.63	17.50	26.13	2"	2-1/2"	2"	1/2"NPT

4600SER.K.BF.30SIMP

Product Diagrams

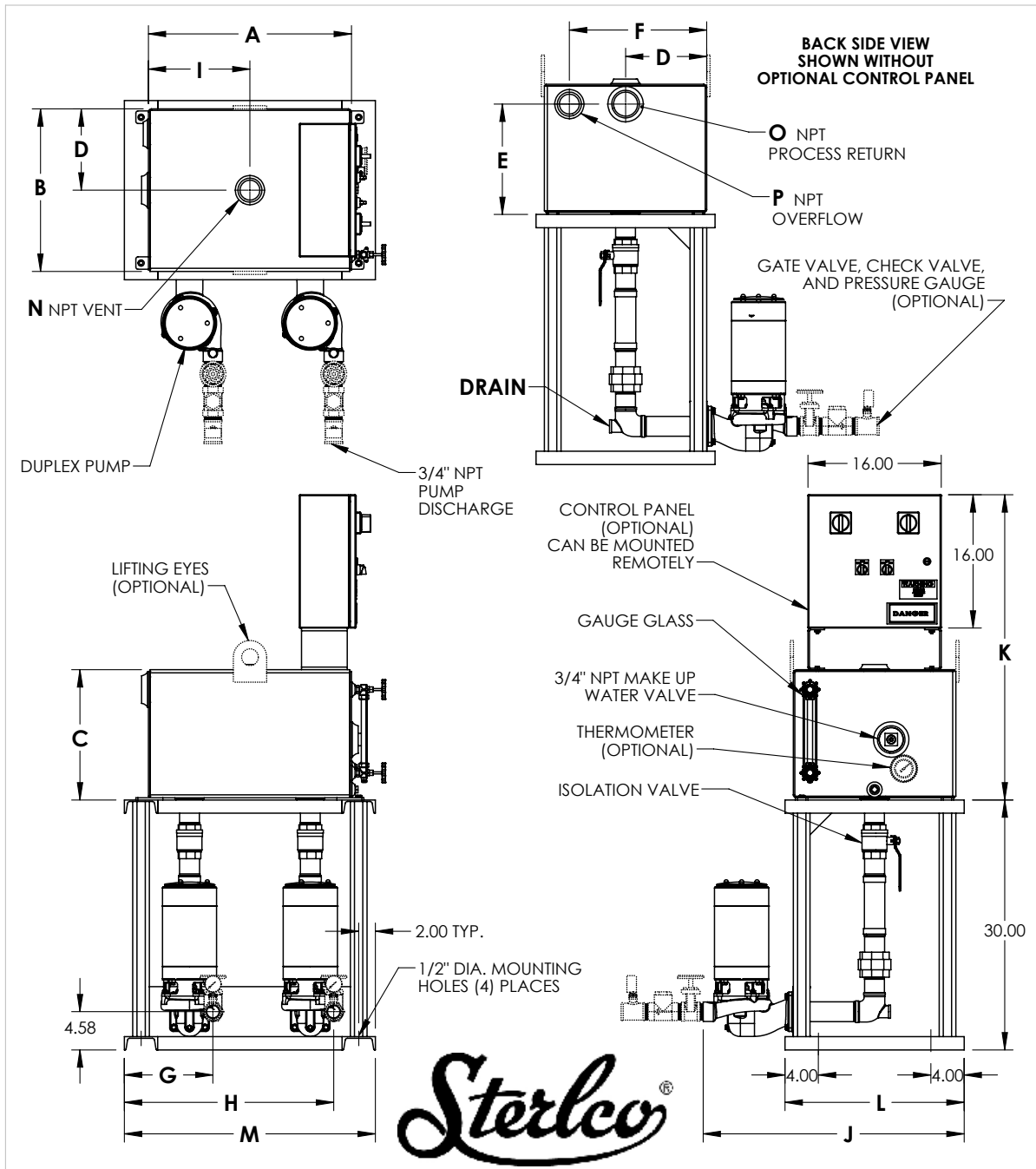


Sterlco
4600 "K" SERIES BOILER FEED UNIT
RECEIVER MATERIAL: STEEL

RECEIVER SIZE	A	B	C	D	E	F	G	H	I	J	K	L	M	N	O	P	DRAIN
30 GAL	24.38	19.50	15.63	9.75	13.25	16.50	7.75	22.25	12.19	34.25	35.63	17.50	26.13	2"	2-1/2"	2"	1/2" NPT
45 GAL	24.00	22.00	20.25	11.00	18.00	19.00	7.57	22.07	12.00	36.75	41.25	20.00	25.75	2"	2-1/2"	2"	1/2" NPT
60 GAL	24.00	27.00	22.25	13.50	20.00	24.00	7.57	22.07	12.00	41.75	43.25	25.00	25.75	2"	2-1/2"	2"	1/2" NPT
95 GAL	36.00	28.00	22.25	14.00	20.00	23.50	7.81	33.81	18.00	42.75	43.25	26.00	37.75	2"	2-1/2"	2"	1/2" NPT
120 GAL	36.00	36.00	22.25	18.00	20.00	31.50	7.81	33.81	18.00	50.75	43.25	34.00	37.50	2"	2-1/2"	2"	1/2" NPT

4600SER.K.BF.30-120

Product Diagrams



4600 "K" SERIES ELEVATED BOILER FEED UNIT
RECEIVER MATERIAL: STEEL

RECEIVER SIZE	A	B	C	D	E	F	G	H	I	J	K	L	M	N	O	P	DRAIN
30 GAL	24.38	19.50	15.63	9.75	13.25	16.50	10.63	25.13	12.19	31.33	35.63	21.50	30.13	2"	2-1/2"	2"	1"NPT
45 GAL	24.00	22.00	20.25	11.00	18.00	19.00	10.45	24.95	12.00	33.83	41.25	24.00	29.75	2"	2-1/2"	2"	1"NPT
60 GAL	24.00	27.00	22.25	13.50	20.00	24.00	10.45	24.95	12.00	38.83	43.25	29.00	29.75	2"	2-1/2"	2"	1"NPT
95 GAL	36.00	28.00	22.25	14.00	20.00	23.50	10.69	36.69	18.00	39.83	43.25	30.00	41.75	2"	2-1/2"	2"	1" NPT
120 GAL	36.00	36.00	22.25	18.00	20.00	31.50	10.69	36.69	18.00	47.83	43.25	38.00	41.75	2"	2-1/2"	2"	1" NPT

4600SER.K.EBF.30-120