



**STEALTH SERIES
SIMPLEX
CONDENSATE UNIT
MODEL SS10-S**

www.Boilersupplies.com



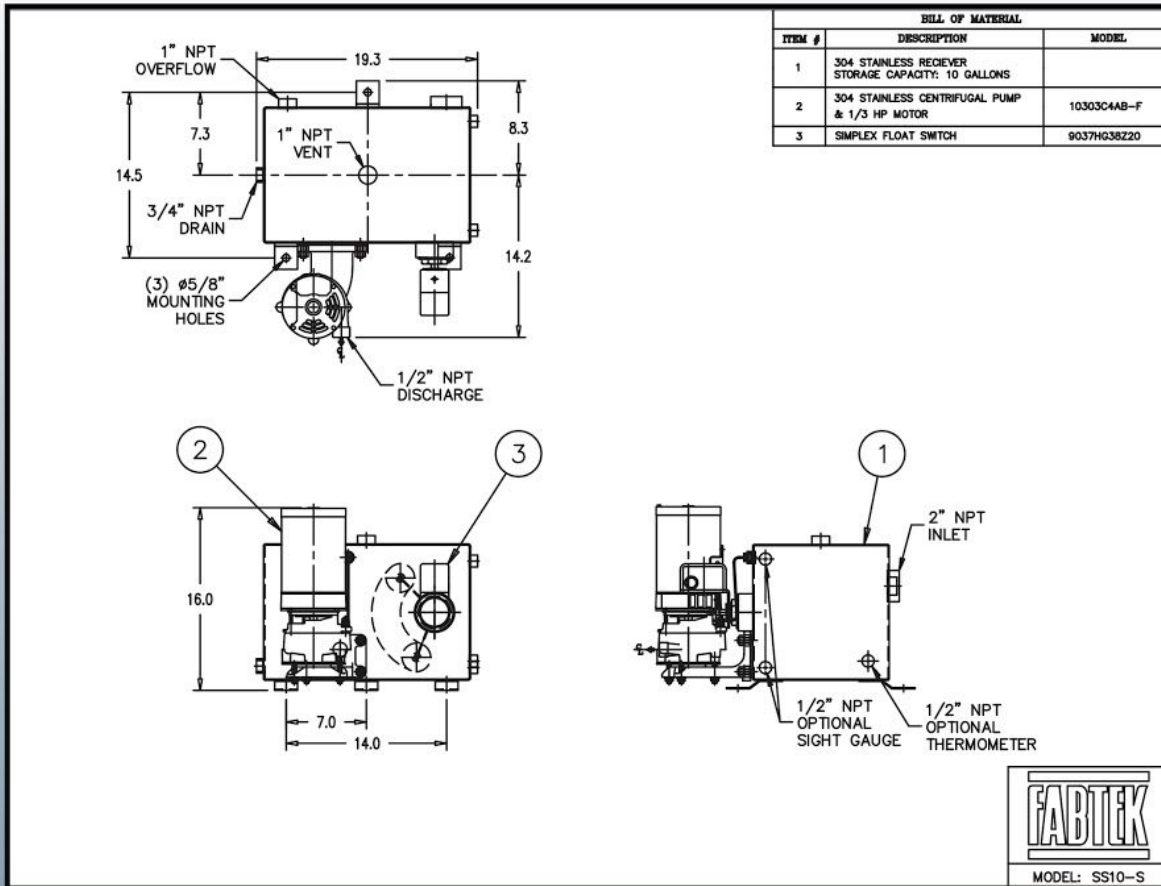
FABTEK STEALTH SERIES

- SMALL
- SIMPLE
- STAINLESS!

Standard Features

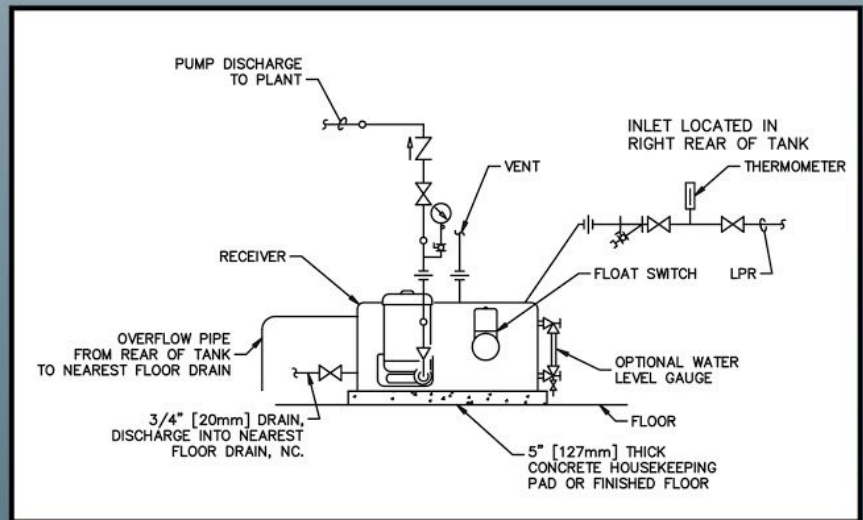
- 10 gallon Stainless Steel Receiver with 20 year warranty against failure due to corrosion
- 1/3 HP Simplex Vertical Flange Mounted Stainless Steel Centrifugal Pump
- Simplex NEMA 1 Float Switch

**EXCEPTIONAL VALUE
EXTRAORDINARY QUALITY**



Optional Equipment

- Brass Sight Gauge Assembly
- SS Sight Gauge Assembly
- Thermometer
- Discharge Pressure Gauge
- Throttling Valve (Globe)
- Stainless Steel Isolation Valve
- Inlet Strainer (2")
- TEFC Motor



SS10-S is suitable for the following capacities

EDR	GPM	PSI
6000	6	20
9000	9	20
12000	12	20



143 McDonough Pkwy • McDonough, GA 30253
Ph. 1-(800)-780-3776 Fax. (770)957-9563

