



Replacement Parts List

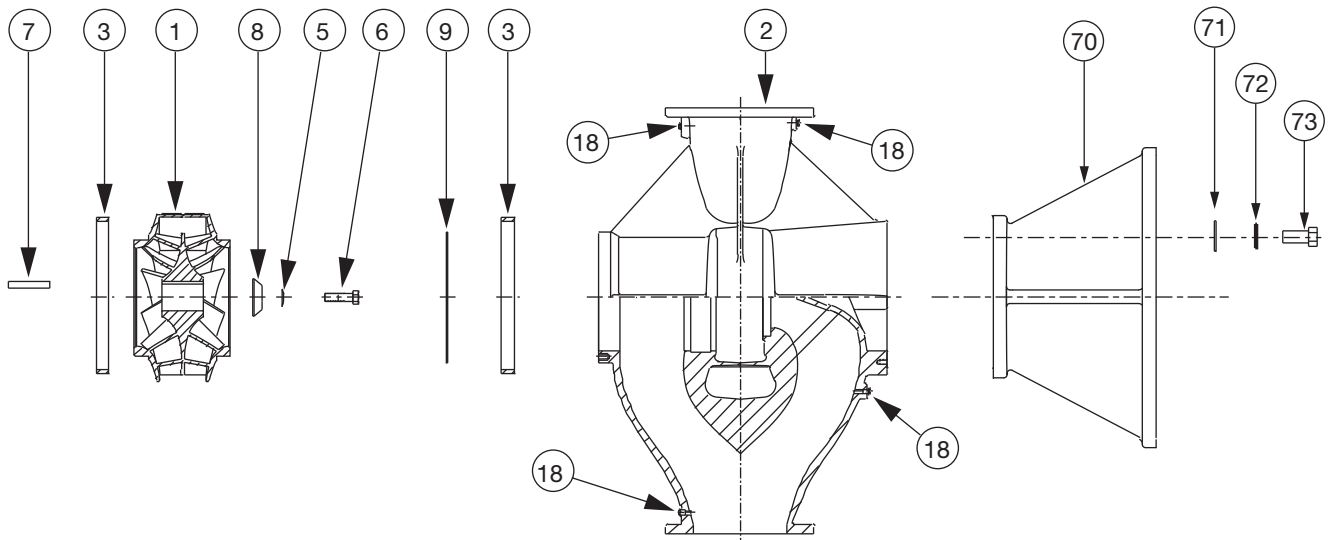
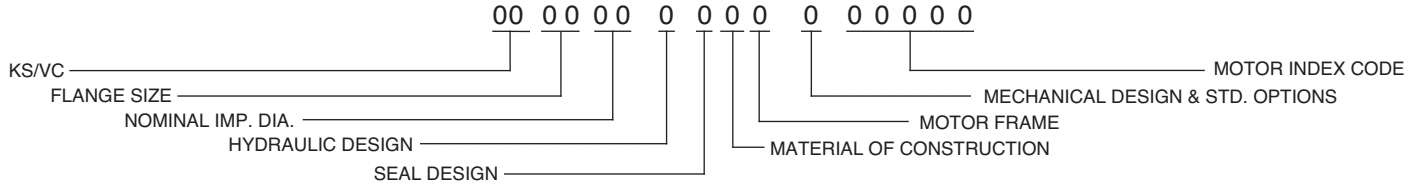
304-427

KS 1213B

SUPERSEDES: October 19, 2007

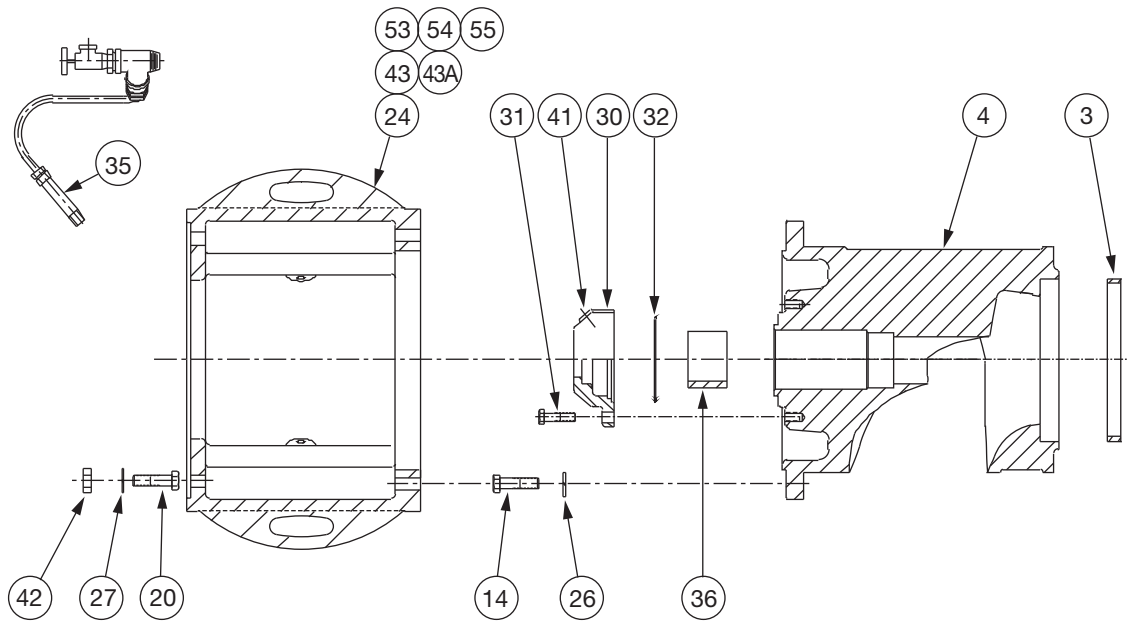
EFFECTIVE: November 1, 2009

WHEN SELECTING AND ORDERING PARTS, ALWAYS REFER TO SERIAL NUMBER ON NAMEPLATE



ITEM NO.	NO. REQ.	DESCRIPTION	1213B	1213B	1213B
			FRAME E or M	FRAME F or N	FRAME G
1	1	IMPELLER (BRZ)	953-2686RP	953-2686RP	953-2686RP
1	1	IMPELLER (C.I.)	N/A	N/A	N/A
2	1	CASING (125#)(NO WR STD)	953-3016RP	953-3016RP	953-3016RP
2	1	CASING (250#)(NO WR STD)	953-3017RP	953-3017RP	953-3017RP
2	1	CASING (125#)(W/WR OPT)	953-3380RP	953-3380RP	953-3380RP
2	1	CASING (250#)(W/WR OPT)	953-3381RP	953-3381RP	953-3381RP
3	2	WEAR RING, BRZ (OPT)	953-2658RP	953-2658RP	953-2658RP
3	2	WEAR RING, C.I. (STD)	953-2849RP	953-2849RP	953-2849RP
5	1	IMPELLER SPRING WASHER	953-2651RP	953-2651RP	953-2651RP
6	1	IMPELLER BOLT	5/8NC x 2-1/4LG	5/8NC x 2-1/4LG	5/8NC x 2-1/4LG
7	1	IMPELLER KEY	1/2x1/2x2-7/8LG	1/2x1/2x2-7/8LG	1/2x1/2x2-7/8LG
8	1	IMPELLER WASHER	953-2138RP	953-2138RP	953-2138RP
9	2	GASKET (CASING)	953-2664RP	953-2664RP	953-2664RP
18	4	PIPE PLUG	1/4 NPT	1/4 NPT	1/4 NPT
70	1	SUPPORT STAND (OPTIONAL)	953-3996RP	953-3996RP	953-3996RP
71	4	WASHER	5/8"	5/8"	5/8"
72	4	LOCK WASHER	5/8"	5/8"	5/8"
73	4	BOLT	5/8"NC x 2"LG	5/8"NC x 2"LG	5/8"NC x 2"LG

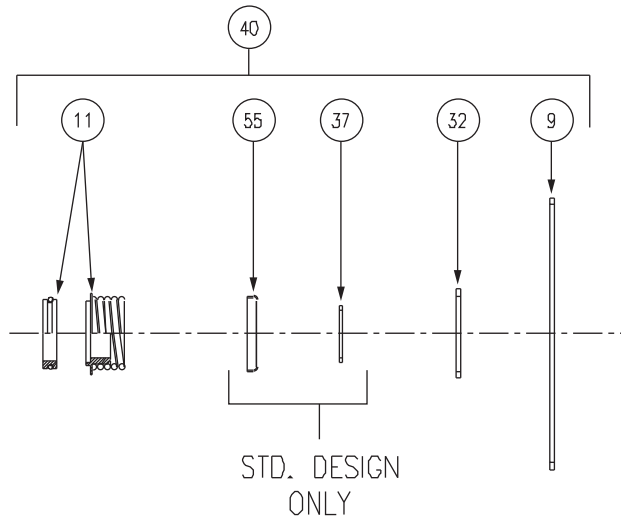
AW-911 REV C



ITEM NO.	NO. REQ.	DESCRIPTION	1213B	1213B	1213B
			FRAME E OR M	FRAME F OR N	FRAME G
3	2	WEAR RING, BRZ (OPT)	953-2658RP	953-2658RP	953-2658RP
3	2	WEAR RING, C.I. (STD)	953-2849RP	953-2849RP	953-2849RP
4	1	COVER (NO WR STD)	953-3018RP	953-3018RP	953-3018RP
4	1	COVER (W/WR OPT)	953-3382RP	953-3382RP	953-3382RP
14	16	CASING BOLT	5/8NC x 3"LG	5/8NC x 3"LG	5/8NC x 3"LG
20	4	MOTOR BOLT	5/8NCx1-3/4LG	5/8NCx1-3/4LG	5/8NC x 3"LG
26	16	CASING WASHER	5/8"	5/8"	5/8"
24	1	SUPPORT HEAD	953-2850RP	953-2850RP	953-2850RP
27	4	MOTOR LOCKWASHER	5/8"	5/8"	5/8"
30	1	SEAL COVER, INT (STD)	953-730RP	953-730RP	953-730RP
30	1	SEAL COVER, EXT (OPT)	953-1325RP	953-1325RP	953-1325RP
31	2	SEAL COVER SCREW	1/2NCx1-3/4LG	1/2NCx1-3/4LG	1/2NCx1-3/4LG
32	1	SEAL COVER GASKET	953-763RP	953-763RP	953-763RP
35	1	TUBE KIT	953-1547RP	953-1547RP	953-1547RP
36	1	THROTTLE BUSHING	953-3031RP	953-3031RP	953-3031RP
41	1	SEAL CAP PLUG	1/8NPT	1/8NPT	1/8NPT
42	4	MOTOR NUT (HP ONLY)	5/8NC	5/8NC	5/8NC
43	1	COUPLER GUARD	953-1586RP	953-1586RP	953-1586RP
43A	1	COUPLER GUARD (W/SLOT)	953-1795RP	953-1795RP	953-1795RP
53	4	COUPLER GUARD SCREW	1/4 x 5/8LG	1/4 x 5/8LG	1/4 x 5/8LG
54	4	COUPLER GUARD WASHER	1/4"	1/4"	1/4"
55	4	COUPLER GUARD L'WASHER	1/4"	1/4"	1/4"

AW-912 REV - A

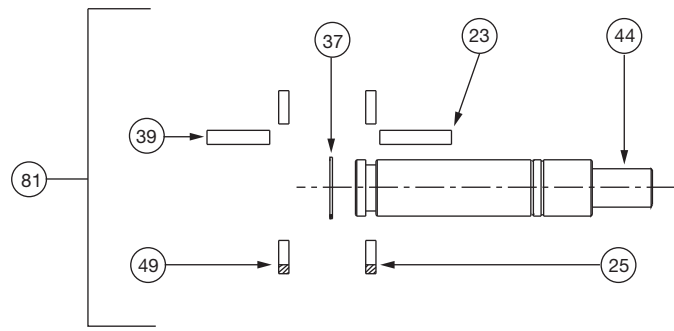
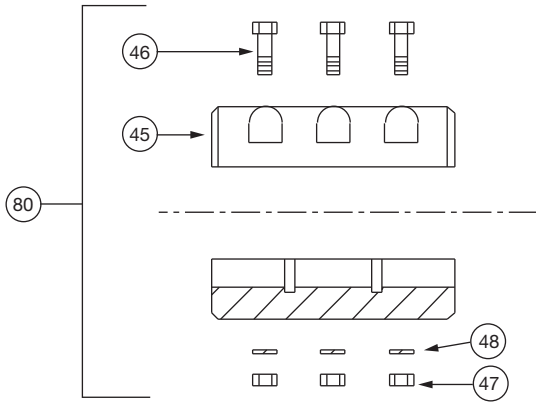
* CZ MOTOR HARDWARE SHOWN ABOVE. FOR HP MOTOR HARDWARE, CONSULT FACTORY.



AW-922 REV -

ITEM NO.	NO. REQ.	DESCRIPTION	1213B	1213B	1213B	1213B	1213B	1213B
			MOTOR FRAME			MOTOR FRAME		
			E OR M	F OR N	G	E OR M	F OR N	G
			MECHANICAL DESIGN A OR C (125#)			MECHANICAL DESIGN B OR D (250#)		
9	1	CASING GASKET	SEE PAGE 1	SEE PAGE 1	SEE PAGE 1	SEE PAGE 1	SEE PAGE 1	SEE PAGE 1
32	1	SEAL CAP GASKET	953-763	953-763	953-763	953-763	953-763	953-763
37	1	RETAINING RING	15-144	15-144	15-144	15-144	15-144	15-144
55	1	SPRINGHOLDER	953-1848RP	953-1848RP	953-1848RP	953-1848RP	953-1848RP	953-1848RP
11	1	SEAL (TYPE B)	951-3690RP	951-3690RP	951-3690RP	951-3770RP	951-3770RP	951-3770RP
11	1	SEAL (TYPE D)	951-3691RP	951-3691RP	951-3691RP	951-3785RP	951-3785RP	951-3785RP
11	1	SEAL (TYPE E)	951-3692RP	951-3692RP	951-3692RP	951-3786RP	951-3786RP	951-3786RP
40	1	SEAL KIT (TYPE B)	953-1548-28RP	953-1548-28RP	953-1548-28RP	953-1548-31RP	953-1548-31RP	953-1548-31RP
40	1	SEAL KIT (TYPE D)	953-1548-29RP	953-1548-29RP	953-1548-29RP	953-1548-32RP	953-1548-32RP	953-1548-32RP
40	1	SEAL KIT (TYPE E)	953-1548-30RP	953-1548-30RP	953-1548-30RP	953-1548-33RP	953-1548-33RP	953-1548-33RP
9	1	CASING GASKET	SEE PAGE 1	SEE PAGE 1	SEE PAGE 1	EXTERNAL DESIGN		
32	1	SEAL CAP GASKET	953-763	953-763	953-763			
11	1	SEAL (TYPE U)	953-1849RP	953-1849RP	953-1849RP			
11	1	SEAL (TYPE V)	953-1850RP	953-1850RP	953-1850RP			
11	1	SEAL (TYPE W)	953-1851RP	953-1851RP	953-1851RP			
11	1	SEAL KIT (TYPE U)	953-1548-34RP	953-1548-34RP	953-1548-34RP			
11	1	SEAL KIT (TYPE V)	953-1548-35RP	953-1548-35RP	953-1548-35RP			
11	1	SEAL KIT (TYPE W)	953-1548-36RP	953-1548-36RP	953-1548-36RP			

STANDARD DESIGN



ITEM NO.		DESCRIPTION	1213B	1213B	1213B
			FRAME E OR M	FRAME F OR N	FRAME G
45	1	COUPLING	953-2666RP	953-2666RP	953-863RP
46	6	BOLT, COUPLING	5/16 x 2-1/2"LG	5/16 x 2-1/2"LG	5/16 x 2-1/2"LG
47	6	NUT, COUPLING	5/16	5/16	5/16
48	6	LOCKWASHER, COUPLING	5/16	5/16	5/16
80	1	COUPLING KIT	953-3043RP	953-3043RP	953-3044RP
25	1	CIRCULAR KEY, PUMP	953-1317RP	953-1317RP	953-1317RP
49	1	CIRCULAR KEY, MOTOR	953-1315RP	953-1315RP	953-1317RP
23	1	COUPLING KEY, PUMP	1/2 x 1/2 x 3"LG	1/2 x 1/2 x 3"LG	1/2 x 1/2 x 3"LG
39	1	COUPLING KEY, MOTOR	3/8 x 3/8 x 3"LG	3/8 x 3/8 x 3"LG	1/2 x 1/2 x 3"LG
37	1	RETAINING RING, SEAL	2 1/8	2 1/8	2 1/8
44	1	SHAFT	953-3019RP	953-3019RP	953-3019RP
81	1	SHAFT KIT	953-3147RP	953-3147RP	953-3147RP

AW-913 REV -

Do it Once. Do it Right.®

TACO, INC., 1160 Cranston Street, Cranston, RI 02920 Telephone: (401) 942-8000 FAX: (401) 942-2360.
TACO (Canada), Ltd., 8450 Lawson Road, Unit #3, Milton, Ontario L9T 0J8. Telephone: 905/564-9422. FAX: 905/564-9436.

Visit our web site at: <http://www.taco-hvac.com>

Printed in USA
 Copyright 2009
 TACO, Inc.