



Replacement Parts List

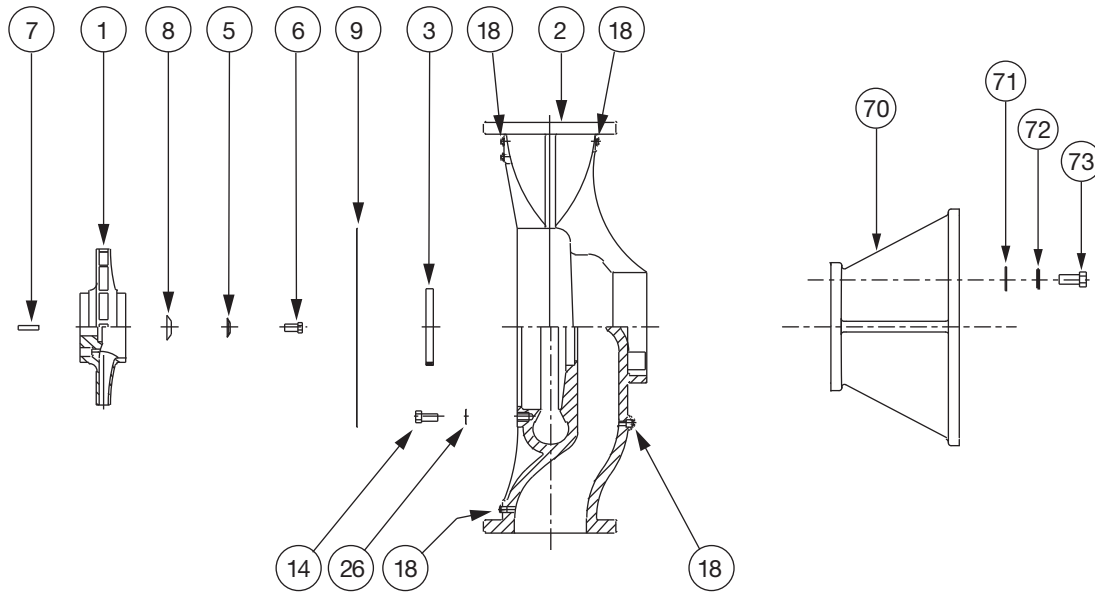
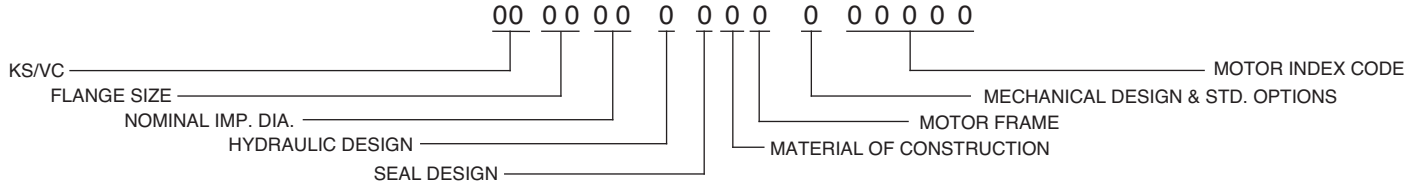
304-425

KS 8016

SUPERSEDES: New

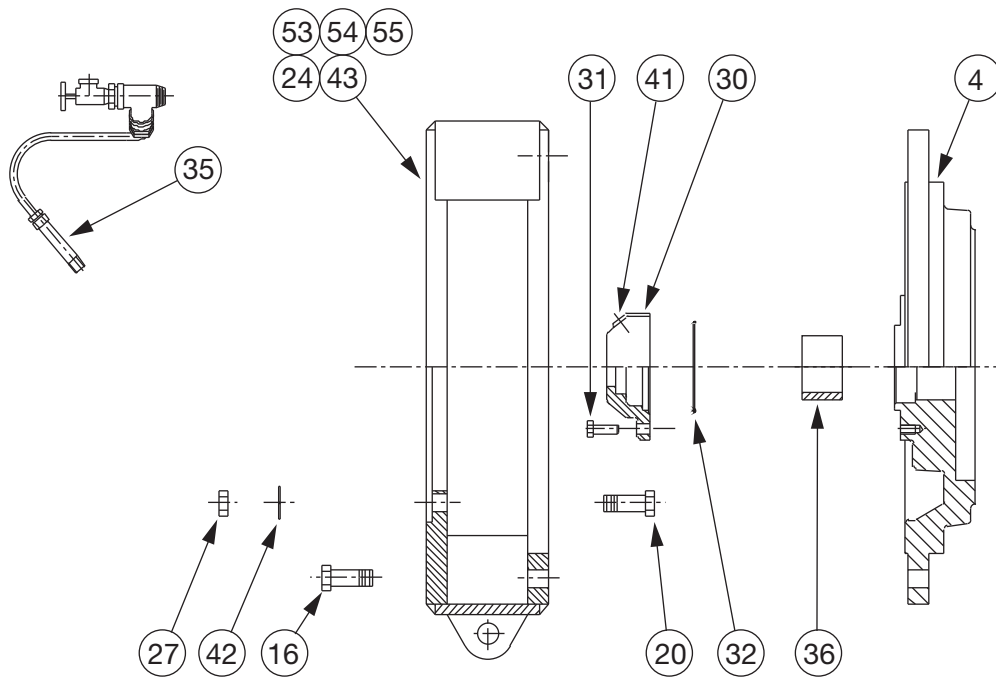
EFFECTIVE: February 8, 2010

WHEN SELECTING AND ORDERING PARTS, ALWAYS REFER TO SERIAL NUMBER ON NAMEPLATE

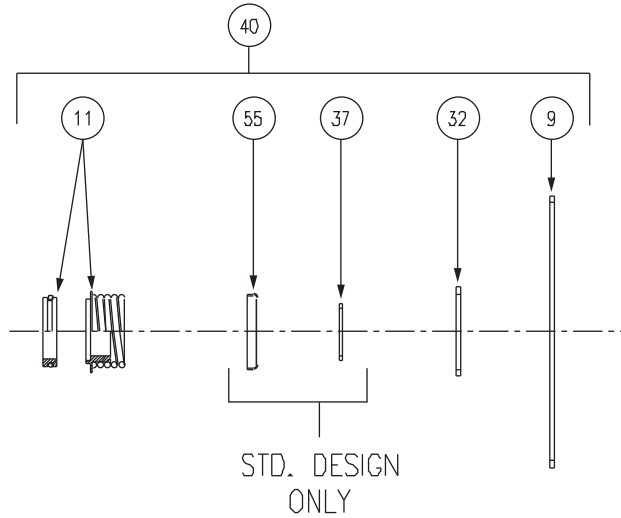


ITEM NO.	NO. REQ.	DESCRIPTION	8016	8016	8016
			FRAME E OR M	FRAME F OR N	FRAME G
1	1	IMPELLER (BRONZE)	953-3834RP	953-3834RP	953-3841RP
1	1	IMPELLER (CAST IRON)	N/A	N/A	N/A
2	1	CASING (125#)(NO WR STD)	953-3836RP	953-3836RP	953-3836RP
2	1	CASING (250#)(NO WR STD)	953-3837RP	953-3837RP	953-3837RP
2	1	CASING (125#)(W/WR OPT)	953-3373RP	953-3373RP	953-3373RP
2	1	CASING (250#)(W/WR OPT)	953-3374RP	953-3374RP	953-3374RP
3	1	WEAR RING (CAST IRON) (STD)	953-2901RP	953-2901RP	953-2901RP
3	1	WEAR RING (BRONZE) (OPT)	953-2492RP	953-2492RP	953-2492RP
5	1	IMPELLER SPRING WASHER	953-2650RP	953-2650RP	953-2651RP
6	1	IMPELLER BOLT	1/2NC x 2" LG	1/2NC x 2" LG	5/8NC x 2-1/4" LG
7	1	IMPELLER KEY	3/8x3/8x2-3/4" LG	3/8x3/8x2-3/4" LG	1/2x1/2x2-1/8" LG
8	1	IMPELLER WASHER	953-2898RP	953-2898RP	953-3030RP
9	1	GASKET (CASING)	953-2594RP	953-2594RP	953-2594RP
14	16	CASING BOLT	5/8NC x 2-3/4" LG	5/8NC x 2-3/4" LG	5/8NC x 2-3/4" LG
18	4	PIPE PLUG	1/4 NPT	1/4 NPT	1/4 NPT
26	16	CASING WASHER	5/8"	5/8"	5/8"
70	1	SUPPORT STAND (OPTIONAL)	953-3989RP	953-3989RP	953-3989RP
71	4	WASHER	1/2"	1/2"	1/2"
72	4	LOCKWASHER	1/2"	1/2"	1/2"
73	4	BOLT	1/2"NC x 1-3/4" LG	1/2"NC x 1-3/4" LG	1/2"NC x 1-3/4" LG

AW-905 REV - B

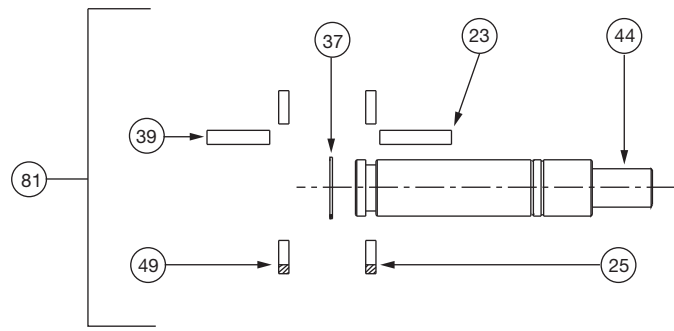
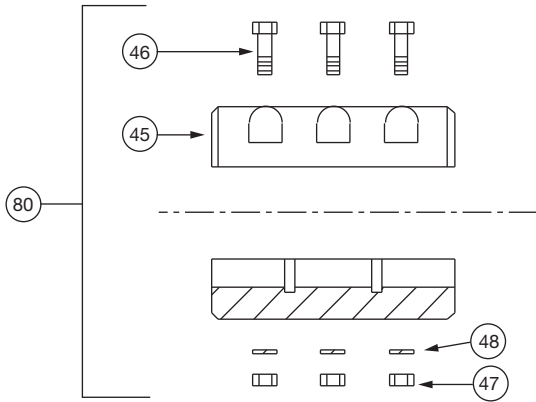


ITEM NO.	NO. REQ.	DESCRIPTION	8016	8016	8016
			FRAME E OR M	FRAME F OR N	FRAME P OR G
4	1	COVER	953-2494RP	953-2494RP	953-2495RP
16	8	COVER BOLT	5/8NC x 2-3/4" LG	5/8NC x 2-3/4" LG	5/8NC x 2-3/4" LG
20	4	MOTOR BOLT (CZ ONLY)	5/8NC x 1-3/4" LG	5/8NC x 1-3/4" LG	---
20	4	MOTOR BOLT (HP ONLY)	5/8NC x 3" LG	5/8NC x 3" LG	5/8NC x 3" LG
24	1	SUPPORT HEAD	953-2132RP	953-2132RP	953-2132RP
27	4	MOTOR LOCKWASHER	5/8"	5/8"	5/8"
30	1	SEAL CAP (STD)	953-1318RP	953-1318RP	953-730RP
30	1	SEAL CAP (EXTERIOR DES)	953-1325RP	953-1325RP	953-1818RP
31	2	SEAL CAP SCREW	1/2NC x 1-3/4" LG	1/2NC x 1-3/4" LG	1/2NC x 1-3/4" LG
32	1	SEAL CAP GASKET	953-763RP	953-763RP	953-763RP
35	1	TUBE KIT	953-1547RP	953-1547RP	953-1547RP
36	1	THROTTLE BUSHING	953-1322RP	953-1322RP	953-1801RP
41	1	SEAL CAP PLUG	1/8NPT	1/8NPT	1/8NPT
42	4	MOTOR NUT (HP ONLY)	5/8NC	5/8NC	5/8NC
43	1	COUPLING GUARD	953-2907RP	953-2907RP	953-2907RP
43A	1	COUPLING GUARD (W/SLOT)	953-2908RP	953-2908RP	953-2908RP
53	4	COUPLING GUARD SCREW	1/4 x 5/8" LG	1/4 x 5/8" LG	1/4 x 5/8" LG
54	4	COUPLING GUARD WASHER	1/4"	1/4"	1/4"
55	4	COUPLING GUARD L'WASHER	1/4"	1/4"	1/4"



AW-920 REV -

ITEM NO.	NO. REQ.	DESCRIPTION	8016			8016			8016			STANDARD DESIGN
			E or M	F or N	G	E or M	F or N	G	E or M	F or N	G	
			MOTOR FRAME			MOTOR FRAME			MOTOR FRAME			
			MECHANICAL DESIGN A OR C (125#)			MECHANICAL DESIGN B OR D (250#)			MECHANICAL DESIGN B OR D (250#)			
9	1	CASING GASKET	SEE PAGE 1	SEE PAGE 1	SEE PAGE 1	SEE PAGE 1	SEE PAGE 1	SEE PAGE 1	SEE PAGE 1	SEE PAGE 1	SEE PAGE 1	
32	1	SEAL CAP GASKET	953-763	953-763	953-763	953-763	953-763	953-763	953-763	953-763	953-763	
37	1	RETAINING RING	15-149	15-149	15-144	15-149	15-149	15-144	15-149	15-149	15-144	
55	1	SPRINGHOLDER	953-1531RP	953-1531RP	953-1848RP	953-1531RP	953-1531RP	953-1848RP	953-1531RP	953-1531RP	953-1848RP	
11	1	SEAL (TYPE B)	951-2966RP	951-2966RP	951-3690RP	951-5151RP	951-5151RP	951-3770RP	951-5151RP	951-5151RP	951-3770RP	
11	1	SEAL (TYPE D)	951-2967RP	951-2967RP	951-3691RP	951-5152RP	951-5152RP	951-3785RP	951-5152RP	951-5152RP	951-3785RP	
11	1	SEAL (TYPE E)	951-2968RP	951-2968RP	951-3692RP	951-5153RP	951-5153RP	951-3786RP	951-5153RP	951-5153RP	951-3786RP	
40	1	SEAL KIT (TYPE B)	953-1548-7RP	953-1548-7RP	953-1548-28RP	953-1548-16RP	953-1548-16RP	953-1548-31RP	953-1548-16RP	953-1548-16RP	953-1548-31RP	
40	1	SEAL KIT (TYPE D)	953-1548-8RP	953-1548-8RP	953-1548-29RP	953-1548-17RP	953-1548-17RP	953-1548-32RP	953-1548-17RP	953-1548-17RP	953-1548-32RP	
40	1	SEAL KIT (TYPE E)	953-1548-9RP	953-1548-9RP	953-1548-30RP	953-1548-18RP	953-1548-18RP	953-1548-33RP	953-1548-18RP	953-1548-18RP	953-1548-33RP	
			MOTOR FRAME			MOTOR FRAME			MOTOR FRAME			
9	1	CASING GASKET	SEE PAGE 1	SEE PAGE 1	SEE PAGE 1	EXTERNAL DESIGN						
32	1	SEAL CAP GASKET	953-763	953-763	953-763							
11	1	SEAL (TYPE U)	953-1328RP	953-1328RP	953-1849RP							
11	1	SEAL (TYPE V)	953-1331RP	953-1331RP	953-1850RP							
11	1	SEAL (TYPE W)	953-1334RP	953-1334RP	953-1851RP							
11	1	SEAL KIT (TYPE U)	953-1548-25RP	953-1548-25RP	953-1548-34RP							
11	1	SEAL KIT (TYPE V)	953-1548-26RP	953-1548-26RP	953-1548-35RP							
11	1	SEAL KIT (TYPE W)	953-1548-27RP	953-1548-27RP	953-1548-36RP							



ITEM NO.		DESCRIPTION	8016	8016	8016
			FRAME E OR M	FRAME F OR N	FRAME G
45	1	COUPLING	953-1527RP	953-1527RP	953-863RP
46	6	BOLT, COUPLING	5/16 x 2-1/2"LG	5/16 x 2-1/2"LG	5/16 x 2-1/2"LG
47	6	NUT, COUPLING	5/16	5/16	5/16
48	6	LOCKWASHER, COUPLING	5/16	5/16	5/16
80	1	COUPLING KIT	953-1607RP	953-1607RP	953-3044RP
25	1	CIRCULAR KEY, PUMP	953-1316RP	953-1316RP	953-1317RP
49	1	CIRCULAR KEY, MOTOR	953-1315RP	953-1315RP	953-1317RP
23	1	COUPLING KEY, PUMP	1/2 x 1/2 x 2 1/2"LG	1/2 x 1/2 x 2 1/2"LG	1/2 x 1/2 x 2 3/4"LG
39	1	COUPLING KEY, MOTOR	3/8 x 3/8 x 2-3/4"LG	3/8 x 3/8 x 2-3/4"LG	1/2 x 1/2 x 2 3/4"LG
37	1	RETAINING RING, SEAL	1 7/8	1 7/8	2 1/8
44	1	SHAFT	953-3028RP	953-3028RP	953-3029RP
81	1	SHAFT KIT	953-3149RP	953-3149RP	953-3150RP

AW-915 REV -

Do it Once. Do it Right.®

TACO, INC., 1160 Cranston Street, Cranston, RI 02920 Telephone: (401) 942-8000 FAX: (401) 942-2360.
TACO (Canada), Ltd., 8450 Lawson Road, Unit #3, Milton, Ontario L9T 0J8. Telephone: 905/564-9422. FAX: 905/564-9436.

Visit our web site at: <http://www.taco-hvac.com>

Printed in USA
 Copyright 2010
 TACO, Inc.