



Replacement Parts List

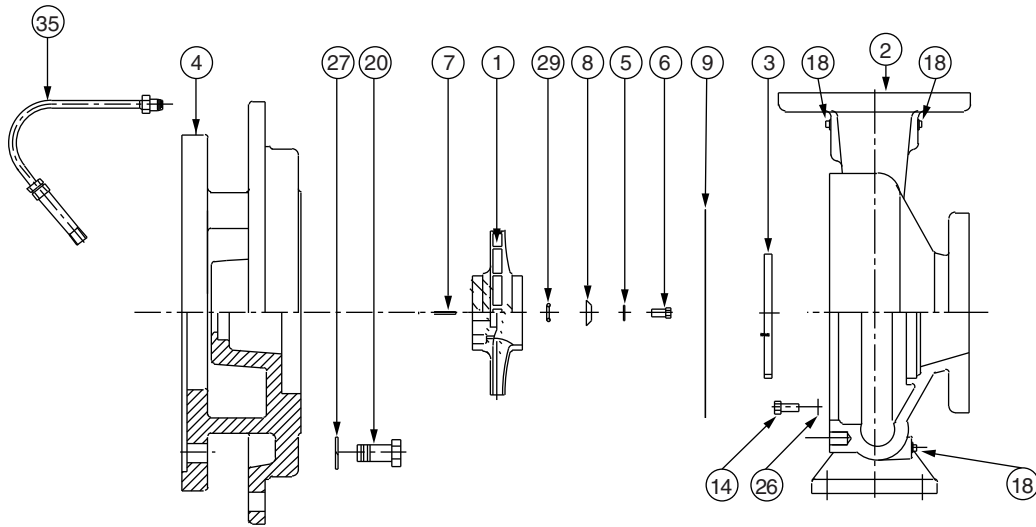
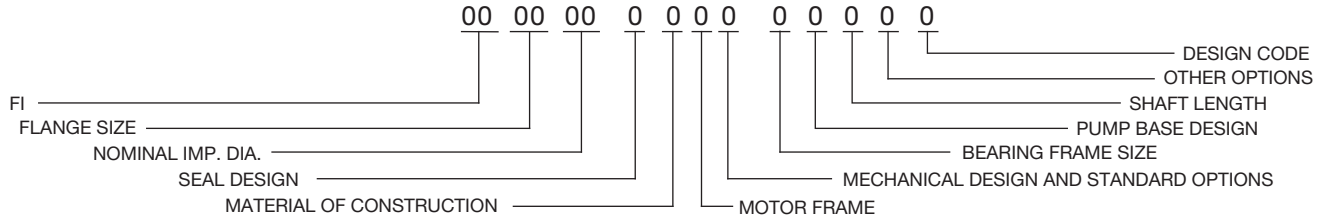
304-361

FI 1207 & 1507

SUPERSEDES: 304-361 March 1, 2012

EFFECTIVE: November 1, 2012

WHEN SELECTING AND ORDERING PARTS, ALWAYS REFER TO SERIAL NUMBER ON NAMEPLATE

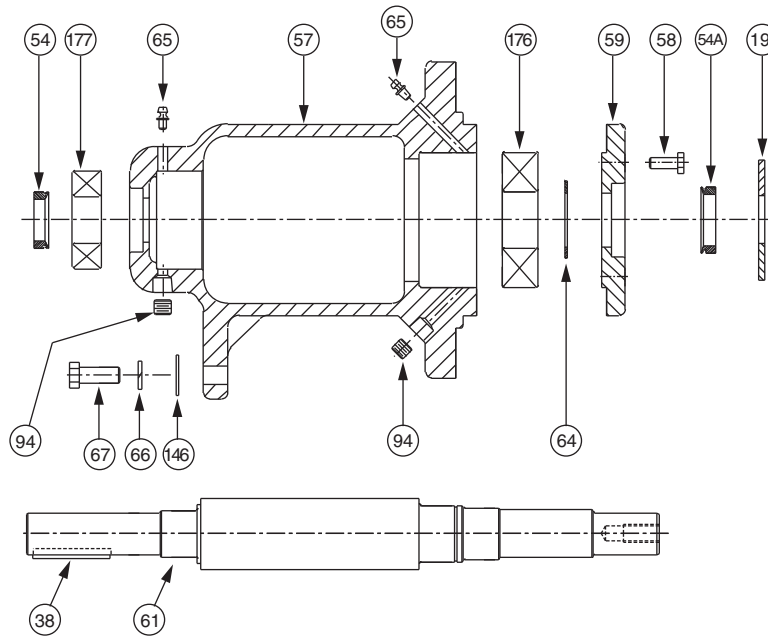


ITEM NO.	NO. REQ.	DESCRIPTION	1207	1507
			BEARING FRAME H	BEARING FRAME H
1	1	IMPELLER (CI)	953-555RP	953-556RP
1	1	IMPELLER (BRZ)	953-930RP	953-1051RP
2	1	CASING (125#)(NO W/R)	953-2387RP*	953-2395RP*
2	1	CASING (250#)(NO W/R)	953-2388RP*	953-2396RP*
2	1	CASING (125#)(BRZ W/R)	953-2389RP*	953-2397RP*
2	1	CASING (250#)(BRZ W/R)	953-2390RP*	953-2398RP*
3	1(W/R)	WEAR RING (BRZ)	953-596RP	953-1160RP
5	1	DDWDY WASHER	951-2578RP	951-2578RP
6	1	IMPELLER BOLT (SST)	3/8NCX1LG	3/8NCX1LG
7	1	IMPELLER KEY (SST)	3/16X3/16X1-1/8LG	3/16X3/16X1-1/8LG
8	1	IMPELLER WASHER	953-828RP	953-828RP
9	1	GASKET (CASING)	953-568RP	953-568RP
14	8	CASING BOLT (ST)	3/8NCX1LG	3/8NCX1LG
18	3	PIPE PLUG (BRS)	1/4 NPT	1/4 NPT
26	8	CASING WASHER (ZN)	3/8	3/8
29	1	IMPELLER GASKET	953-830RP	953-830RP
4	1	COVER	953-1168RP	953-1163RP
20	4	MOTOR BOLT	3/8NCX1LG	3/8NCX1LG
27	4	MOTOR WASHER	3/8	3/8
35	1	TUBE KIT	951-1547RP	951-1547RP

AW-690 REV A

*1207 AND 1507 CASINGS ARE HYDRAULIC DESIGN "B"

FI 'H' Frame Replacement Parts



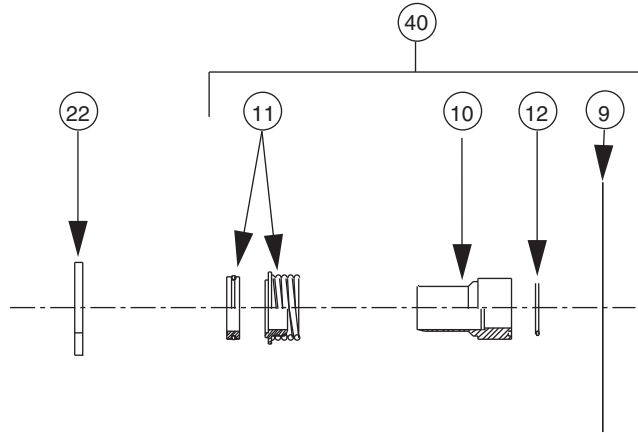
'H' BEARING FRAME

	STANDARD SEALED BEARINGS	OPTIONAL GREASEABLE BEARINGS
--	--------------------------	------------------------------

ITEM NO	NO. REQ.	DESCRIPTION	PART NO.	PART NO.	REMARKS
19	1	FRAME ASSEMBLY (CS)	953-2218RP	953-2219RP	CARBON STEEL SHAFT
19	1	FRAME ASSEMBLY (SS)	953-2224RP	953-2225RP	STAINLESS STEEL SHAFT
57	1	HOUSING	953-2205RP	953-2200RP	
61	1	SHAFT (CS)	953-2202RP	953-2202RP	CARBON STEEL
61	1	SHAFT (SS)	953-2204RP	953-2204RP	STAINLESS STEEL
59	1	END CAP	953-2201RP	953-2201RP	
67	1	BOLT, FOOT SUPPORT	10-215RP	10-215RP	
66	1	LOCKWASHER, FOOT SUPPORT	14-101RP	14-101RP	
146	1	FLAT WASHER, FOOT SUPPORT	14-316RP	14-316RP	
38	1	KEY-SHAFT	13-103RP	13-103RP	
176	1	BALL BEARING, FRONT (THRUST)	820-1039RP	820-067RP	
177	1	BALL BEARING, REAR (RADIAL)	953-2216RP	951-2482RP	
19	1	DEFLECTOR	900-043RP	900-043RP	
64	1	RETAINING RING	15-125RP	15-125RP	
58	4	HEX HEAD BOLT, END CAP	10-244RP	10-244RP	
54	1	V RING SEAL, REAR	953-1575-5RP	953-1575-5RP	
54A	1	V RING SEAL, FRONT	953-1575-2RP	953-1575-2RP	
65	2	GREASE FITTING	-----	15-203RP	
94	2	PIPE PLUG	-----	16-140RP	

AW-701 REV/C

FI Series Seal Replacement Parts (EPT)

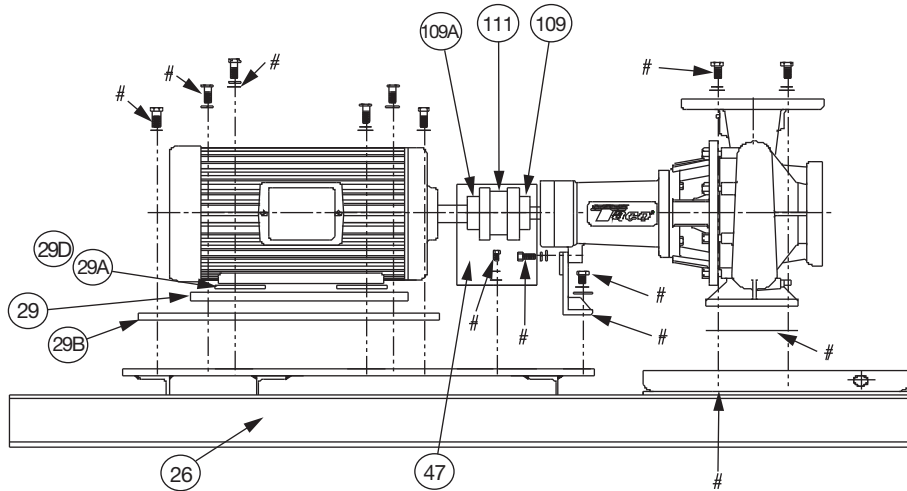


1206, 1506, 2506		1206, 1506, 2506	
1207, 1507, 2007	2507, 3007, 4075, 4007, 5007	1207, 1507, 2007	2507, 3007, 4075, 4007, 5007
	2508		2508
2009C, 2509C	1509, 2009, 2009C, 2509, 2509C, 3009, 4009, 5009, 5095, 6009	2009C, 2509C	1509, 2009, 2009C, 2509, 2509C, 3009, 4009, 5009, 5095, 6009
2510C	2510	2510C	2510
	1511, 2511, 3011, 4011, 4011C, 5011, 6011		1511, 2511, 3011, 4011, 4011C, 5011, 6011
	2513, 3013, 4013	5013, 6013	2513, 3013, 4013

ITEM NO.	NO. REQ.	DESCRIPTION	BEARING FRAME			BEARING FRAME		
			H	J	L	H	J	L
			MECHANICAL DESIGN (125#)			MECHANICAL DESIGN (250#)		
9	1	GASKET (CASING)	SEE PAGE 1	SEE PAGE 1	SEE PAGE 1	SEE PAGE 1	SEE PAGE 1	SEE PAGE 1
10	1	SLEEVE (SS)	953-1118RP	953-1170RP	953-1172RP	953-1892RP	953-1891RP	953-1890RP
10	1	SLEEVE (BRZ)	953-1119RP	953-1171RP	953-1173RP	953-1861RP	953-1887RP	953-1888RP
11	1	SEAL (TYPE B)	951-3157RP	951-3158RP	951-2966RP	951-3766RP	951-5158RP	951-5151RP
11	1	SEAL (TYPE D)	951-3159RP	951-3160RP	951-2967RP	951-3781RP	951-5159RP	951-5152RP
11	1	SEAL (TYPE E)	951-3161RP	951-3162RP	951-2968RP	951-3782RP	951-5160RP	951-5153RP
12	1	SLEEVE "O"-RING	592-525RP	951-3042RP	951-5277RP	592-525RP	951-3042RP	951-5277RP
22	1	DEFLECTOR	900-043RP	951-3040RP	951-3065RP	900-043RP	951-3040RP	951-3065RP
40	1	SEAL KIT (TYPE B) SS	953-1549-1RP	953-1549-4RP	953-1549-14RP	953-1549-7RP	953-1549-10RP	953-1549-17RP
40	1	SEAL KIT (TYPE B) BRZ	953-1549-1BRP	953-1549-4BRP	953-1549-14BRP	953-1549-7BRP	953-1549-10BRP	953-1549-17BRP
40	1	SEAL KIT (TYPE D) SS	953-1549-2RP	953-1549-5RP	953-1549-15RP	953-1549-8RP	953-1549-11RP	953-1549-18RP
40	1	SEAL KIT (TYPE D) BRZ	953-1549-2BRP	953-1549-5BRP	953-1549-15BRP	953-1549-8BRP	953-1549-11BRP	953-1549-18BRP
40	1	SEAL KIT (TYPE E) SS	953-1549-3RP	953-1549-6RP	953-1549-16RP	953-1549-9RP	953-1549-12RP	953-1549-19RP
40	1	SEAL KIT (TYPE E) BRZ	953-1549-3BRP	953-1549-6BRP	953-1549-16BRP	953-1549-9BRP	953-1549-12BRP	953-1549-19BRP

AW-698 REV H

Motor Replacement Parts



SEE FI BASE HARDWARE SPREAD SHEET FOR ALL PUMPS

NOTE: INCLUDE 'RP' AT END OF P/N

ITEM NO.	NO. REQ.	DESCRIPTION	FI 1207 MOTOR FRAMES (NEMA STD.) "T"											
			56	143T	145T	182T	184T	213T	215T	254T	256T	284T	286T	
47	1	COUPLER GUARD	951-3075	951-3075	951-3075	951-3075	951-3075	951-3077	951-3077	951-3077				
109	1	PUMP COUPLER HALF	953-2427	953-2427	953-2427	953-2427	953-2427	953-2433	953-2433	953-2439				
109A	1	MTR. COUPLER HALF	953-2425	953-2427	953-2427	953-2429	953-2429	953-2437	953-2437	953-2445				
111	1	COUPLER INSERT	953-2424	953-2424	953-2424	953-2424	953-2424	953-2430	953-2430	953-2438				
*	1	OSHA COUPLER GUARD	953-1914	953-1914	953-1914	953-1914	953-1914	953-1914	953-1914	953-1914				
26	1	BASE	953-1686	953-1686	953-1686	953-1686	953-1686	953-2335	953-2335	953-2335				
29	2	SPACER {1ST} MOTOR	951-5203	951-5201	951-5201									
29A	4	SPACER RD (1ST) MOTOR						953-2229	953-2229					

ITEM NO.	NO. REQ.	DESCRIPTION	FI 1507 MOTOR FRAMES (NEMA STD.) "T"											
			56	143T	145T	182T	184T	213T	215T	254T	256T	284TS	286T	
47	1	COUPLER GUARD	951-3075	951-3075	951-3075	951-3075	951-3075	951-3077	951-3077	951-3077	951-3077	951-3574		
109	1	PUMP COUPLER HALF	953-2427	953-2427	953-2427	953-2427	953-2427	953-2433	953-2433	953-2439	953-2439	953-2439	953-2439	
109A	1	MTR. COUPLER HALF	953-2425	953-2427	953-2427	953-2429	953-2429	953-2437	953-2437	953-2445	953-2445	953-2445	953-2445	
111	1	COUPLER INSERT	953-2424	953-2424	953-2424	953-2424	953-2424	953-2430	953-2430	953-2438	953-2438	953-2438	953-2438	
*	1	OSHA COUPLER GUARD	953-1914	953-1914	953-1914	953-1914	953-1914	953-1914	953-1914	953-1914	953-1914	953-1914	953-1915	
26	1	BASE	953-1686	953-1686	953-1686	953-1686	953-1686	953-2335	953-2335	953-2335	953-2335	953-2335	953-1712	
29	2	SPACER {1ST} MOTOR	951-5203	951-5201	951-5201									
29A	4	SPACER RD (1ST) MOTOR						953-2229	953-2229					

AW-724 REV C

Do it Once. Do it Right.®

TACO, INC., 1160 Cranston Street, Cranston, RI 02920 Telephone: (401) 942-8000 FAX: (401) 942-2360.
TACO (Canada), Ltd., 8450 Lawson Road, Unit #3, Milton, Ontario L9T 0J8. Telephone: 905/564-9422. FAX: 905/564-9436.

Visit our web site at: <http://www.taco-hvac.com>

Printed in USA

Copyright 2012

TACO, Inc.