



# Replacement Parts List

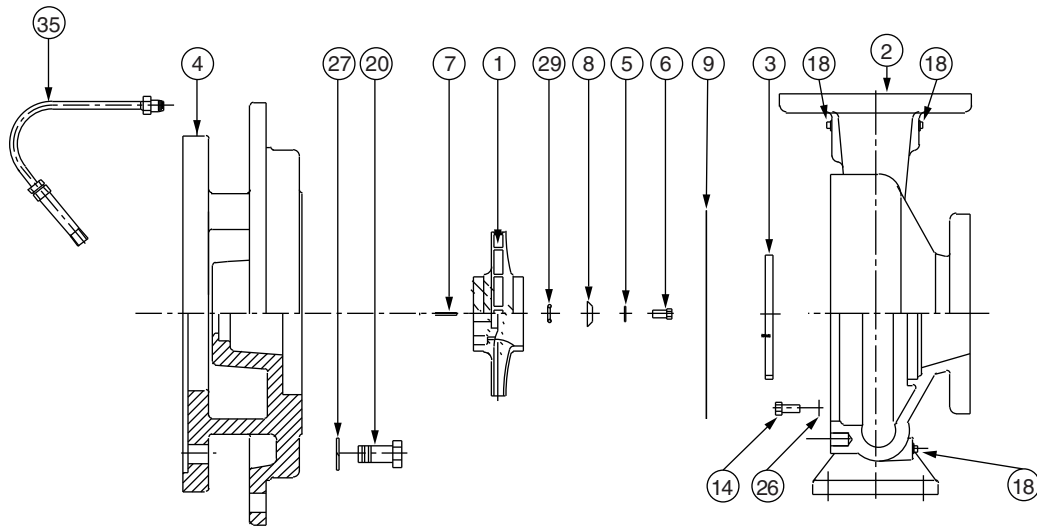
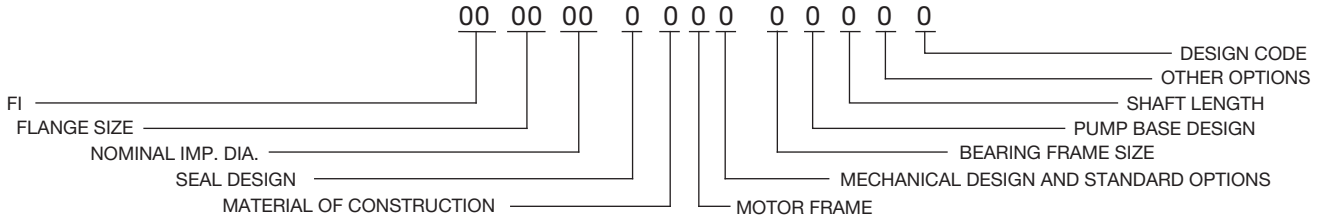
304-369

## FI 5013 & 6013

SUPERSEDES: 304-369 June 1, 2011

EFFECTIVE: March 1, 2012

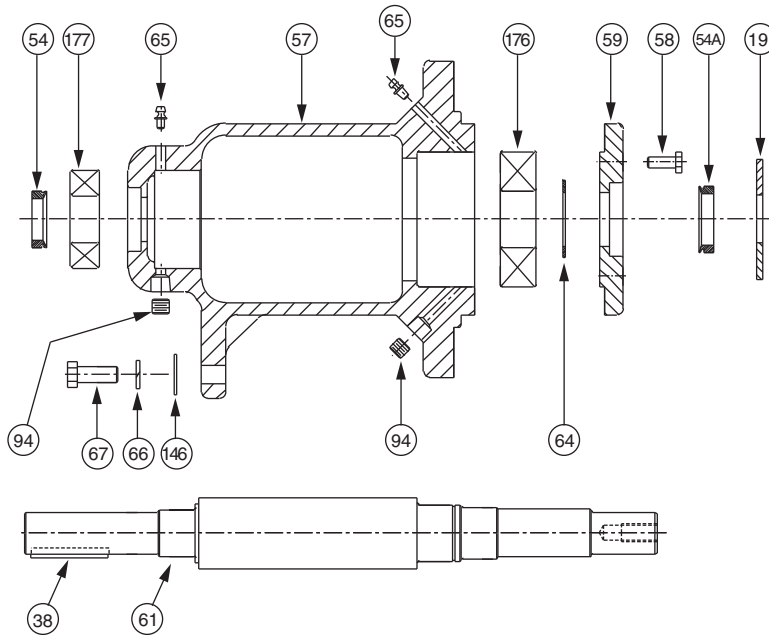
WHEN SELECTING AND ORDERING PARTS, ALWAYS REFER TO SERIAL NUMBER ON NAMEPLATE



ITEM NO.	NO. REQ.	DESCRIPTION	5013	6013
			BEARING FRAME L	BEARING FRAME L
1	1	IMPELLER (CI)	953-1156RP	953-1195RP
1	1	IMPELLER (BRZ)	953-1157RP	953-1196RP
2	1	CASING (125#)(NO W/R)	953-1154RP	953-2077RP
2	1	CASING (250#)(NO W/R)	953-1256RP	953-2078RP
2	1	CASING (125#)(BRZ W/R)	953-2330RP	953-2332RP
2	1	CASING (250#)(BRZ W/R)	953-2331RP	953-2333RP
3	1(W/R)	WEAR RING (BRZ)	953-1155RP	LE5319-12RP
5	1	DOWDY WASHER	951-2579RP	951-2579RP
6	1	IMPELLER BOLT (SST)	1/2NCX1-3/4LG	1/2NCX1-3/4LG
7	1	IMPELLER KEY (SST)	3/8X3/8X2LG	3/8X3/8X2LG
8	1	IMPELLER WASHER	953-1099RP	953-1099RP
9	1	GASKET (CASING)	953-1011RP	953-1011RP
14	12	CASING BOLT (ST)	5/8NCX1-1/2LG	5/8NCX1-1/2LG
18	3	PIPE PLUG (BRS)	1/4 NPT	1/4 NPT
26	12	CASING WASHER (ZN)	5/8	5/8
29	1	IMPELLER GASKET	951-5277RP	951-5277RP
4	1	COVER	953-1176RP	953-1202RP
20	4	MOTOR BOLT	1/2NCX1-1/4LG	1/2NCX1-1/4LG
27	4	MOTOR WASHER	1/2	1/2
35	1	TUBE KIT	951-1547RP	951-1547RP

AW-720 REV B

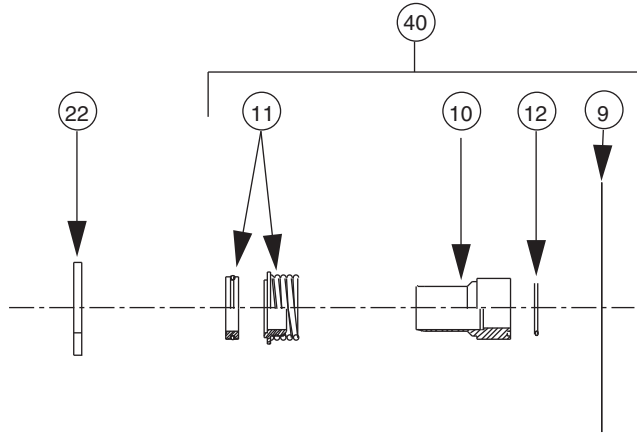
# FI 'L' Frame Replacement Parts



## 'L' BEARING FRAME

ITEM NO	NO. REQ.	DESCRIPTION			REMARKS
			STANDARD SEALED BEARINGS	OPTIONAL GREASEABLE BEARINGS	
			PART NO.	PART NO.	
19	1	FRAME ASSEMBLY (CS)	953-2220RP	953-2221RP	CARBON STEEL SHAFT
19	1	FRAME ASSEMBLY (SS)	953-2226RP	953-2227RP	STAINLESS STEEL SHAFT
57	1	HOUSING	953-2207RP	953-2206RP	
61	1	SHAFT (CS)	953-2209RP	953-2209RP	CARBON STEEL
61	1	SHAFT (SS)	953-2210RP	953-2210RP	STAINLESS STEEL
59	1	END CAP	953-2208RP	953-2208RP	
67	1	BOLT-FOOT SUPPORT	10-234RP	10-234RP	
66	1	LOCKWASHER, FOOT SUPPORT	14-102RP	14-102RP	
146	1	FLAT WASHER, FOOT SUPPORT	14-302RP	14-302RP	
38	1	KEY-SHAFT	13-110RP	13-110RP	
176	1	BALL BEARING, FRONT (THRUST)	951-5598RP	872-056RP	
177	1	BALL BEARING, REAR (RADIAL)	951-5599RP	951-2491RP	
19	1	DEFLECTOR	951-3040RP	951-3040RP	
64	1	RETAINING RING	15-141RP	15-141RP	
58	4	HEX HEAD BOLT, END CAP	10-207RP	10-207RP	
54	1	V RING SEAL, REAR	953-1575-3RP	953-1575-3RP	
54A	1	V RING SEAL, FRONT	953-1575-3RP	953-1575-3RP	
65	2	GREASE FITTING	-----	15-203RP	
94	2	PIPE PLUG	-----	16-140RP	

# FI Series Seal Replacement Parts (EPT)

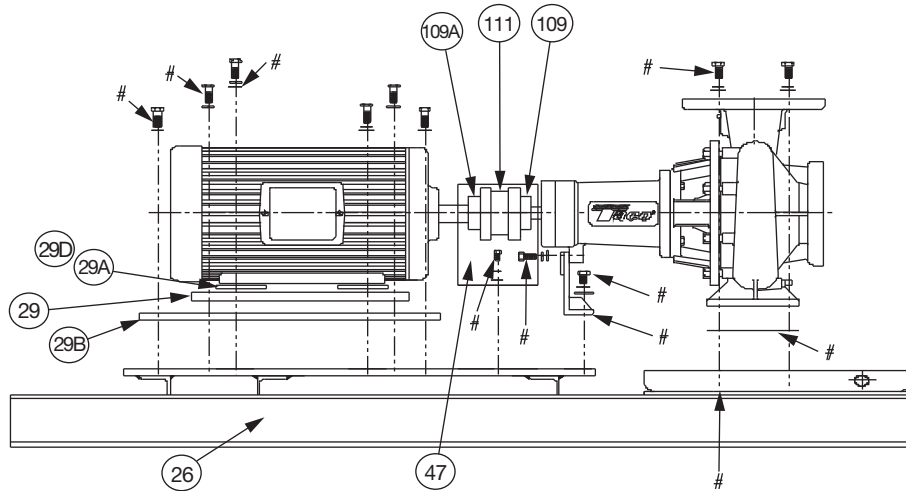


1206, 1506, 2506		1206, 1506, 2506	
1207, 1507, 2007	2507, 3007, 4075, 4007, 5007	1207, 1507, 2007	2507, 3007, 4075, 4007, 5007
	2508		2508
	1509, 2009, 2509, 3009, 4009, 5009, 5095, 6009		1509, 2009, 2509, 3009, 4009, 5009, 5095, 6009
	2510		2510
	1511, 2511, 3011, 4011, 5011, 6011		1511, 2511, 3011, 4011, 5011, 6011
	2513, 3013, 4013	5013, 6013	2513, 3013, 4013

ITEM NO.	NO. REQ.	DESCRIPTION	BEARING FRAME			BEARING FRAME		
			H	J	L	H	J	L
			MECHANICAL DES. (125#)			MECHANICAL DES. (250#)		
9	1	GASKET (CASING)	SEE PAGE 1	SEE PAGE 1	SEE PAGE 1	SEE PAGE 1	SEE PAGE 1	SEE PAGE 1
10	1	SLEEVE (SS)	953-1118RP	953-1170RP	953-1172RP	953-1892RP	953-1891RP	953-1890RP
10	1	SLEEVE (BRZ)	953-1119RP	953-1171RP	953-1173RP	953-1861RP	953-1887RP	953-1888RP
11	1	SEAL (TYPE B)	951-3157RP	951-3158RP	951-2966RP	951-3766RP	951-5158RP	951-5151RP
11	1	SEAL (TYPE D)	951-3159RP	951-3160RP	951-2967RP	951-3781RP	951-5159RP	951-5152RP
11	1	SEAL (TYPE E)	951-3161RP	951-3162RP	951-2968RP	951-3782RP	951-5160RP	951-5153RP
12	1	SLEEVE GASKET	953-830RP	951-3042RP	951-5277RP	953-830RP	951-3042RP	951-5277RP
22	1	DEFLECTOR	900-043RP	951-3040RP	951-3065RP	900-043RP	951-3040RP	951-3065RP
40	1	SEAL KIT (TYPE B) SS	953-1549-1RP	953-1549-4RP	953-1549-14RP	953-1549-7RP	953-1549-10RP	953-1549-17RP
40	1	SEAL KIT (TYPE B) BRZ	953-1549-1BRP	953-1549-4BRP	953-1549-14BRP	953-1549-7BRP	953-1549-10BRP	953-1549-17BRP
40	1	SEAL KIT (TYPE D) SS	953-1549-2RP	953-1549-5RP	953-1549-15RP	953-1549-8RP	953-1549-11RP	953-1549-18RP
40	1	SEAL KIT (TYPE D) BRZ	953-1549-2BRP	953-1549-5BRP	953-1549-15BRP	953-1549-8BRP	953-1549-11BRP	953-1549-18BRP
40	1	SEAL KIT (TYPE E) SS	953-1549-3RP	953-1549-6RP	953-1549-16RP	953-1549-9RP	953-1549-12RP	953-1549-19RP
40	1	SEAL KIT (TYPE E) BRZ	953-1549-3BRP	953-1549-6BRP	953-1549-16BRP	953-1549-9BRP	953-1549-12BRP	953-1549-19BRP

AW-698 REV D

# Motor Replacement Parts



# SEE FI BASE HARDWARE SPREAD SHEET FOR ALL PUMPS

NOTE: INCLUDE 'RP' AT END OF P/N

ITEM NO.	NO. REQ.	DESCRIPTION	FI 5013 MOTOR FRAMES (NEMA STD.) "T"												
			182T	184T	213T	215T	254T	256T	284T	286T	324T	326T	364T	365T	405T
47	1	COUPLER GUARD	-	-	-	951-3078	951-3078	951-3078	951-3078	951-3078	951-3140	951-3140	-	-	-
109	1	PUMP COUPLER HALF	-	-	-	953-2445	953-2445	953-2452	953-2452	953-2460	953-2460	953-2469	953-2469	-	-
109A	1	MTR. COUPLER HALF	-	-	-	953-2443	953-2445	953-2452	953-2454	953-2462	953-2463	953-2472	953-2474	-	-
111	1	COUPLER INSERT	-	-	-	953-2438	953-2438	953-2446	953-2446	953-2455	953-2455	953-2464	953-2464	-	-
*	1	OSHA COUPLER GUARD	-	-	-	953-1915	953-1915	953-1915	953-1915	953-1916	953-1916	953-1916	953-1916	-	-
26	1	BASE	-	-	-	953-2377	953-2377	953-2377	953-2377	953-2377	953-2378	953-2378	953-2378	-	-
29	2	SPACER (1ST) MOTOR	-	-	-	951-5204	-	-	-	-	-	-	-	-	-
29A	4	SPACER RD (1ST) MOTOR	-	-	-	-	953-2228	953-2228	-	-	953-2229	953-2229	-	-	-

ITEM NO.	NO. REQ.	DESCRIPTION	FI 6013 MOTOR FRAMES (NEMA STD.) "T"												
			182T	184T	213T	215T	254T	256T	284T	286T	324T	326T	364T	365T	405T
47	1	COUPLER GUARD	-	-	-	-	951-1747	951-1747	951-1747	951-1747	951-1747	951-1747	951-3568	951-3568	951-3568
109	1	PUMP COUPLER HALF	-	-	-	-	953-2452	953-2452	953-2452	953-2460	953-2460	953-2469	953-2469	953-2476	953-2479
109A	1	MTR. COUPLER HALF	-	-	-	-	953-2452	953-2452	953-2454	953-2462	953-2463	953-2472	953-2474	953-2477	953-2480
111	1	COUPLER INSERT	-	-	-	-	953-2446	953-2446	953-2446	953-2455	953-2455	953-2464	953-2464	953-2475	953-2478
*	1	OSHA COUPLER GUARD	-	-	-	-	953-1915	953-1915	953-1915	953-1916	953-1916	953-1916	953-1916	953-1916	953-1916
26	1	BASE	-	-	-	-	953-2376	953-2376	953-2376	953-2376	953-2376	953-2376	953-2270	953-2270	953-2270
29	2	SPACER (1ST) MOTOR	-	-	-	-	951-5208	951-5208	-	-	-	-	953-1728	953-1728	-
29B	2	SPACER (2ND) MOTOR	-	-	-	-	-	-	-	-	-	-	951-5212	951-5212	-
29A	4	SPACER RD (1ST) MOTOR	-	-	-	-	-	-	953-2229	953-2229	-	-	-	-	953-2229
29D	4	SPACER RD (2ND) MOTOR	-	-	-	-	953-2228	953-2228	-	-	-	-	-	-	-

AW-730 REV C

**Do it Once. Do it Right.®**

**TACO, INC.**, 1160 Cranston Street, Cranston, RI 02920 Telephone: (401) 942-8000 FAX: (401) 942-2360.  
**TACO (Canada), Ltd.**, 8450 Lawson Road, Unit #3, Milton, Ontario L9T 0J8. Telephone: 905/564-9422. FAX: 905/564-9436.  
 Visit our web site at: <http://www.taco-hvac.com>

Printed in USA  
 Copyright 2012  
 TACO, Inc.