



Replacement Parts List

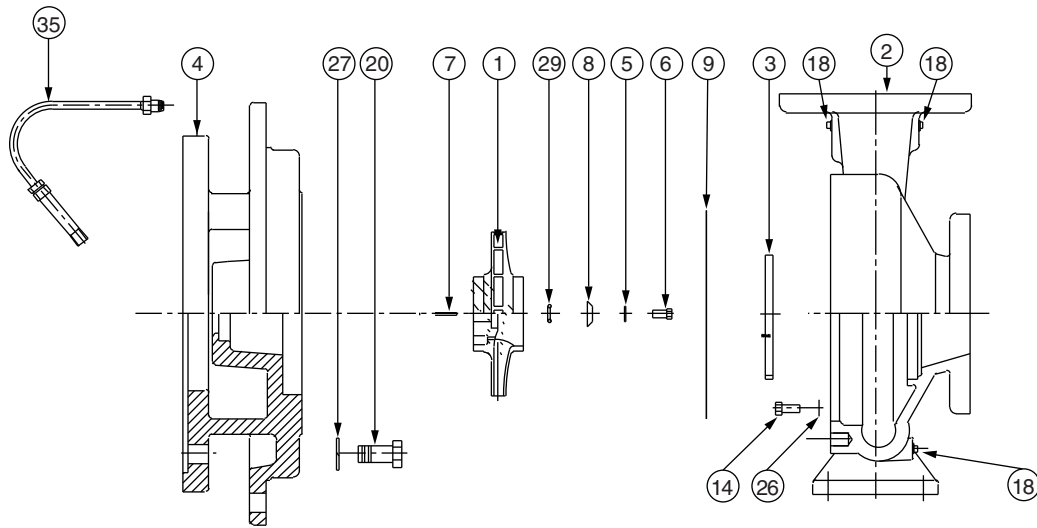
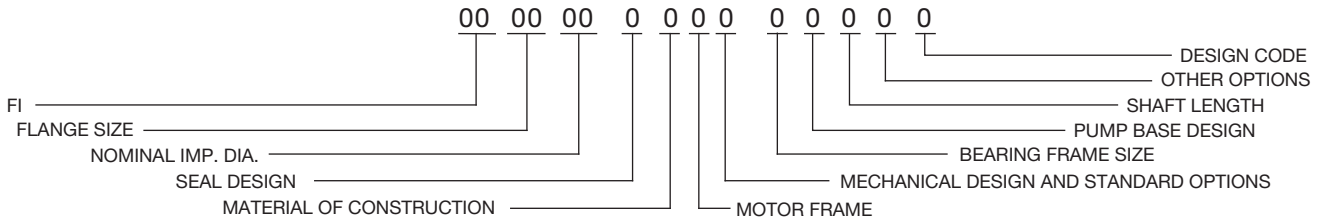
304-407

FI 8013

SUPERSEDES: February 19, 2007

EFFECTIVE: March 1, 2012

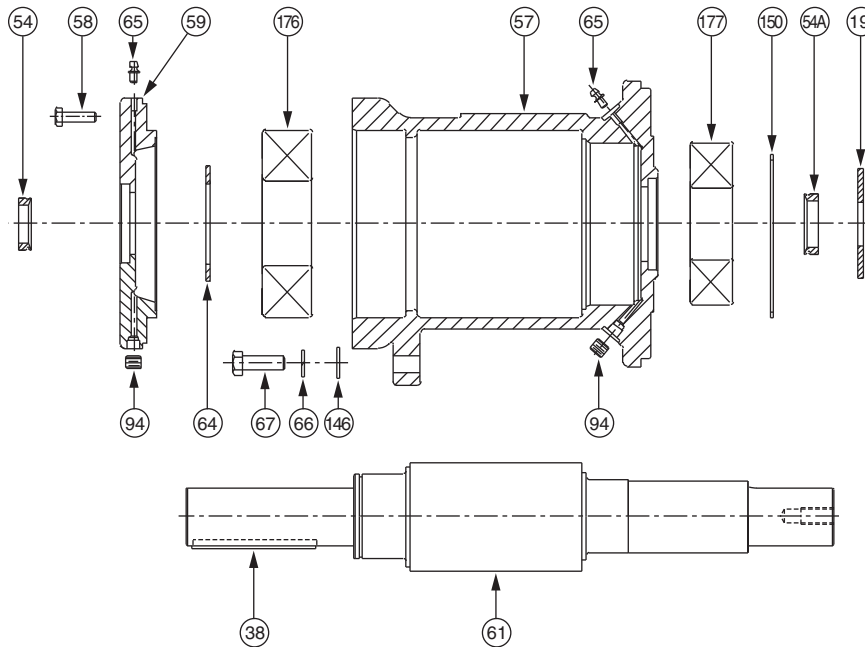
WHEN SELECTING AND ORDERING PARTS, ALWAYS REFER TO SERIAL NUMBER ON NAMEPLATE



ITEM NO.	NO. REQ.	DESCRIPTION	BEARING FRAME N
1	1	IMPELLER (CAST IRON)	953-2058RP
1	1	IMPELLER (BRONZE)	953-2059RP
2	1	CASING (125#)	953-2249RP
2	1	CASING (250#)	953-2250RP
3	1	WEAR RING (BRONZE)	953-1677RP
3	1	WEAR RING (CAST IRON)	953-2060RP
5	1	DOWDY WASHER	951-2518RP
6	1	IMPELLER BOLT (SST)	5/8"UNC-2A X 2"LG
7	1	IMPELLER KEY (SST)	1/2 x 1/2 x 2-1/2LG
8	1	IMPELLER WASHER	953-2519RP
9	1	GASKET (CASING)	953-2253RP
14	12	CASING BOLT (ST)	5/8NC X 1-1/2LG
18	3	PIPE PLUG (BRS)	1/4 NPT
26	12	CASING WASHER (ZN)	5/8
29	1	IMPELLER GASKET	953-2564RP
4	1	COVER	953-2334RP
20	4	MOTOR BOLT	1/2NC X 1-1/4LG
27	4	MOTOR WASHER	1/2
35	1	TUBE KIT	951-1547RP

AW-784 RevA

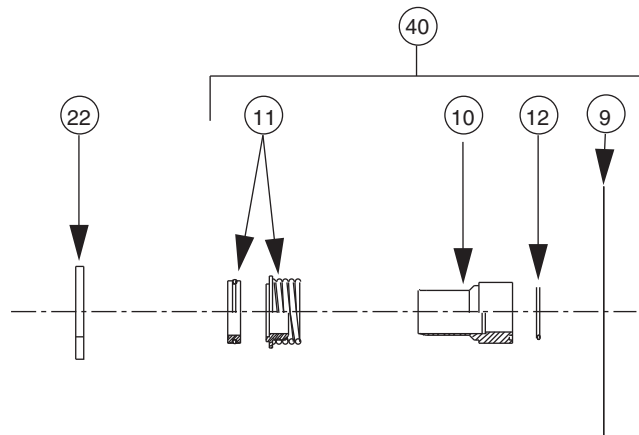
FI 'N' Frame Replacement Parts



'N' BEARING FRAME

ITEM NO	NO. REQ.	DESCRIPTION	STANDARD SEALED BEARINGS	OPTIONAL GREASEABLE BEARINGS	REMARKS
			PART NO.	PART NO.	
19	1	FRAME ASSEMBLY (CS)	953-3107RP	953-3115RP	CARBON STEEL SHAFT
19	1	FRAME ASSEMBLY (SS)	953-3108RP	953-3116RP	STAINLESS STEEL SHAFT
57	1	HOUSING	953-3020RP	953-3113RP	
61	1	SHAFT (CS)	953-3078RP	953-3078RP	CARBON STEEL
61	1	SHAFT (SS)	953-3079RP	953-3079RP	STAINLESS STEEL
59	1	END CAP	953-3027RP	953-3027RP	
67	1	BOLT, FOOT SUPPORT	10-215RP	10-215RP	
66	1	LOCKWASHER, FOOT SUPPORT	14-101RP	14-101RP	
146	1	FLAT WASHER, FOOT SUPPORT	14-316RP	14-316RP	
38	1	KEY, SHAFT	13-147RP	13-147RP	
176	1	BALL BEARING, REAR (THRUST)	953-1872RP	953-1872RP	
177	1	BALL BEARING, FRONT (RADIAL)	953-1877RP	953-1877RP	
19	1	DEFLECTOR	953-2522RP	953-2522RP	
64	1	RETAINING RING	15-151RP	15-151RP	
58	4	HEX HD BOLT, END CAP	10-227RP	10-227RP	
54	1	V RING SEAL, REAR	953-1575-3RP	953-1575-3RP	
54A	1	V RING SEAL, FRONT	953-1575-6RP	953-1575-6RP	
65	2	GREASE FITTING	---	15-203RP	
94	2	PIPE PLUG	---	16-140RP	
150	1	WAVE WASHER	14-332RP	14-332RP	

FI Series Seal Replacement Parts (EPT)



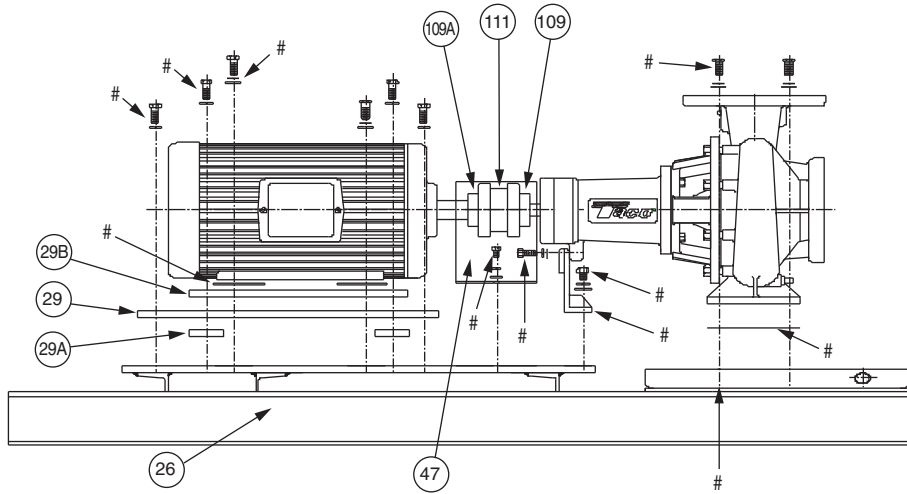
(EPT)

8013

ITEM NO.	NO. REQ.	DESCRIPTION	BEARING FRAME	
			N	N
			MECH DES. (125#)	MECH DES. (250#)
9	1	GASKET (CASING)	SEE PAGE 1	SEE PAGE 1
10	1	SLEEVE (SS)	953-2066RP	953-2064RP
10	1	SLEEVE (BRZ)	953-2065RP	953-2063RP
11	1	SEAL (TYPE B)	950-969RP	953-2575RP
11	1	SEAL (TYPE D)	950-971RP	953-2576RP
11	1	SEAL (TYPE E)	950-973RP	953-2577RP
12	1	SLEEVE GASKET	953-2564RP	953-2564RP
22	1	DEFLECTOR	953-2522RP	953-2522RP
40	1	SEAL KIT (TYPE B) SS	953-1549-38RP	953-1549-47RP
40	1	SEAL KIT (TYPE B) BRZ	953-1549-38BRP	953-1549-47BRP
40	1	SEAL KIT (TYPE D) SS	953-1549-39RP	953-1549-48RP
40	1	SEAL KIT (TYPE D) BRZ	953-1549-39BRP	953-1549-48BRP
40	1	SEAL KIT (TYPE E) SS	953-1549-40RP	953-1549-49RP
40	1	SEAL KIT (TYPE E) BRZ	953-1549-40BRP	953-1549-49BRP

AW-812 REV B

Motor Replacement Parts



SEE FI BASE HARDWARE SPREAD SHEET FOR ALL PUMPS

NOTE: INCLUDE RP AT END OF P/N

AW-832 REV D

ITEM NO.	NO. REQ.	DESCRIPTION	FI 8013 MOTOR FRAMES (NEMA STD.) "T"											
			254T	256T	284T	286T	324T	326T	364T	365T	405T	444T	445T	
47	1	COUPLER GUARD	-	951-3079	951-3079	951-3079	951-3079	951-3079	951-3079	951-3568	951-3568	951-3568	951-3568	951-3568
109	1	PUMP COUPLER HALF	-	953-2454	953-2454	953-2462	953-2462	953-2462	953-2471	953-2471	953-2569	953-2569	953-2570	953-2571
109A	1	MTR. COUPLER HALF	-	953-2454	953-2454	953-2462	953-2463	953-2472	953-2474	953-2474	953-2477	953-2480	953-2543	953-2549
111	1	COUPLER INSERT	-	953-2446	953-2446	953-2455	953-2455	953-2464	953-2469	953-2475	953-2475	953-2475	953-2478	953-2544
*	1	OSHA COUPLER GUARD	-	953-1915	953-1915	953-1916	953-1916	953-1916	953-1916	953-1916	953-1916	953-1916	953-1916	953-1916
26	1	BASE	-	953-2531	953-2531	953-2531	953-2531	953-2531	953-2531	953-2529	953-2529	953-2529	953-2529	953-2529
29	2	SPACER (1ST) MOTOR	-	953-5213	-	-	-	-	-	951-5212	951-5212	-	-	-
29B	2	SPACER (2ND) MOTOR	-	-	-	-	-	-	-	951-5212	951-5212	-	-	-
29A	4	SPACER RD (1ST) MOTOR	-	-	953-2229	953-2229	-	-	-	-	-	953-2229	-	-

Do it Once. Do it Right.®

TACO, INC., 1160 Cranston Street, Cranston, RI 02920 Telephone: (401) 942-8000 FAX: (401) 942-2360.
TACO (Canada), Ltd., 8450 Lawson Road, Unit #3, Milton, Ontario L9T 0J8. Telephone: 905/564-9422. FAX: 905/564-9436.
 Visit our web site at: <http://www.taco-hvac.com>

Printed in USA
 Copyright 2012
 TACO, Inc.