

# Lattner

## Lattner Condensate Return & Feedwater Systems

Heavy duty construction. Carbon or stainless steel receivers. Vertical or horizontal orientation. High or low pressure turbine or centrifugal pumps. Designed for maximum efficiency, longevity, and dependability.

### Quick, Easy Installation

Each system is provided as packaged unit: Completely assembled with pump(s), pump motor(s), water gauge set, make-up valve, suction strainer, and shut-off valve.

### Optional Features

- n Duplex or triplex pumps
- n Pump alternators
- n Choice of pump manufacturers
- n Anti-syphon make-up assemblies
- n Steam tank heater kits
- n Electric tank heater kits
- n Fused and non-fused disconnects
- n Magnetic starters
- n Dial thermometers



### LV SERIES VERTICAl CondEnSatE RetuRnS SyStEmS

model	max Boiler Rating (HP)	tank Size (Gal)	Pump motor Size (HP)	Voltage	Shipping Weight (Lbs)		dimensions (diameter x Height)
					Simplex	duplex	
LV5	5	9	1/2	115/1	110	150	14" X 33"
LV8	10	16	1/2	115/1	125	165	18" X 43"
LV16	20	32	1/2	115/1	200	240	18" X 51"
LV20	25	32	3/4	115/1	200	240	18" X 51"
LV20-	25	32	3/4	115/1	200	240	18" X 51"
LV20-	30	46	3/4	220-440/3	200	240	18" X 63"
3 LV25	30	46	3/4	115/1	205	245	18" X 63"
LV25-	30	46	3/4	220-440/3	205	245	18" X 63"
3 LV35	40	46	1-1/2	220-440/3	205	245	18" X 63"
LV60	60	65	3	220-440/3	385	460	24" X 63"
LV75	80	80	3	220-440/3	385	460	24" X 70"
LV75	125	120	5	220-440/3	405	490	28" X 71"
LV100	125	120	5	220-440/3	480	565	28" X 84"
LV150	150	150	5	220-440/3	550	685	28" X 84"

### R SERIES HORIZOntal CondEnSatE RetuRnS SyStEmS

model	max Boiler Rating (HP)	tank Size (Gal)	Pump motor Size (HP)	Voltage	Shipping Weight (Lbs)		dimensions (L X W X H)
					Simplex	duplex	
R1-	10	16	1/2	115/1	150	190	30" X 13" X 29"
Jr.	20	32	1/2	115/1	200	240	34" X 13" X 38"
R1	25	32	3/4	115/1	210	250	34" X 13" X 38"
R2	25	32	3/4	115/1	210	250	34" X 13" X 38"
R2	30	42	3/4	220-440/3	210	250	38" X 14" X 40"
R2-3	30	42	3/4	115/1	250	300	38" X 14" X 40"
R3	30	42	3/4	115/1	250	300	38" X 14" X 40"
R3	40	42	1-1/2	220-440/3	250	310	38" X 14" X 40"
R3-3	40	42	1-1/2	220-440/3	260	320	38" X 14" X 40"
R5	60	55	3	220-440/3	385	460	40" X 20" X 42"
R7	80	120	3	220-440/3	385	460	42" X 25" X 52"
R7	125	120	5	220-440/3	590	675	42" X 25" X 52"
R10	125	120	5	220-440/3	675	760	42" X 25" X 52"
R12							

# Custom Condensate Return & Feedwater Systems

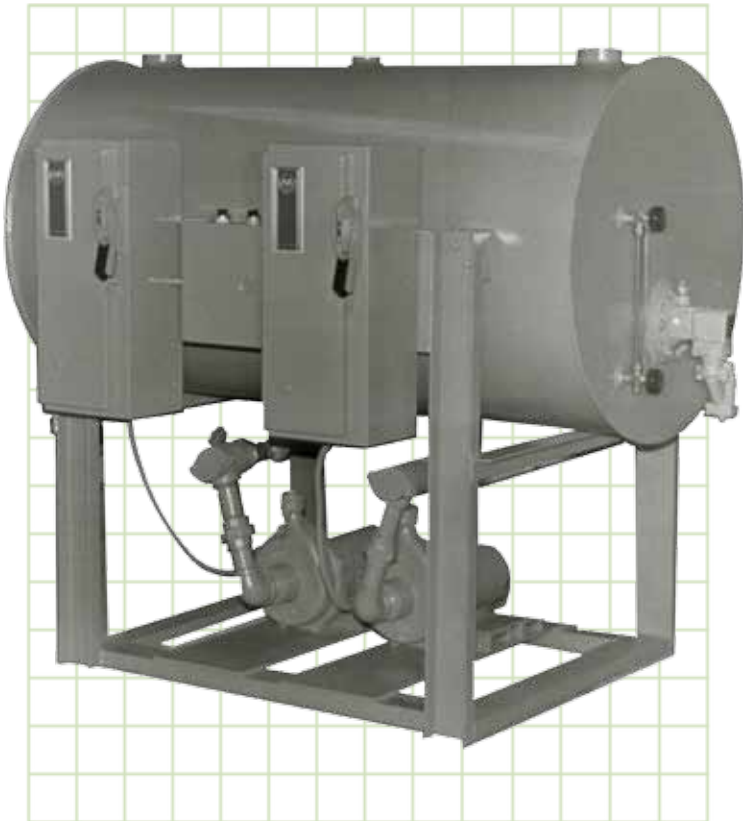
## **Up to 400 Gallon Capacity**

---

Custom horizontal cylindrical condensate return and feedwater systems for all applications (LH Series). Designed for maximum net pump suction head and reliable performance. Can be specified with various manufacturers' pumps. Stainless steel receiver optional.

Like our standard systems, each custom system is provided as a packaged unit: Completely assembled with pump(s), pump motor(s), water gauge set, make-up valve, suction strainer, and shut-off valve.

Please contact factory representative for assistance, design inquiries, and/or specification guidance.



# Solenoid Water Valve

## **For Low Pressure Boilers**

---

Includes stop valve, check valve, and strainer. Wired and assembled with boiler. Water pressure must exceed boiler pressure by at least 10 psi when solenoid valve is used to feed water to boiler.



# 'Model 1' Pump

## **For High Pressure Cold Water Make-Up**

---

Appropriate for boilers 7 horsepower and smaller, Includes solenoid valve and strainer. Wired and assembled with boiler. Use only on closed systems or where no condensate is returned to boiler. Feedwater temperature must not exceed 170 degrees F.



